



rädlinger

PRODUCT RANGE
Construction Machinery Equipment

IN THIS ISSUE, YOU WILL FIND:

Now **more hydraulic attachments.**

Now **more loading shovels.**

Now **more quick-change systems.**

Now **more**  **ädlinger.**

Now **more diversity.**

CONTENT

8 **Quick Couplers/Tilt Motors/Equipment**

- 10 Rädlinger Quick Coupler MS
- 12 Rädlinger Quick Coupler HS
- 14 Rädlinger SWA Solidlink
- 16 Rädlinger Quick Coupler Alpen
- 18 Rädlinger Tilt 90
- 20 Rädlinger Tilt Motor
- 22 Tilt Motor with Quick Coupling System
- 23 Mounting Kit for Hydraulic Quick Couplers
- 24 Hosing Packages
- 25 Hammer Mounting Plates/Adapter Frames/Adapter Plates

26 **Excavator Weight Classes**

28 **Backhoe Buckets**

- 32 Standard Backhoe Bucket (up to 6.0 t)
- 34 Standard Backhoe Bucket (6.0 to 12 t)
- 36 Standard Backhoe Bucket (11 to 40 t)
- 38 Standard Backhoe Bucket without Teeth (6.0 t)
- 40 Standard Backhoe Bucket without Teeth (6.0 to 12 t)
- 42 Standard Backhoe Bucket without Teeth (11 to 40 t)
- 44 Backhoe Bucket X-TREME (11 to 40 t)
- 46 Backhoe Bucket X-TREME Alpen (11 to 40 t)
- 48 Cable Bucket
- 50 Sewer Bucket
- 52 Excavation Bucket Landscaping
- 54 Backhoe Bucket with Cylinder (11 to 40 t)
- 56 Backhoe Bucket with Tilt Motor
- 58 Skeleton Bucket

60 **Mining Buckets**

- 64 Backhoe Bucket Individual/Heavy
- 66 Rock Bucket
- 68 Stone Placing Bucket
- 69 Ripper Bucket

70 **Demolition Buckets**

- 74 Universal Bucket for Demolition and Recycling
- 75 Foundation Bucket
- 76 Excavation Bucket

78 **Ditch Cleaning Buckets**

- 82 Ditch Cleaning Bucket "Rigid" (up to 12 t)
- 84 Ditch Cleaning Bucket "Rigid" (11 to 29 t)
- 86 Ditch Cleaning Bucket with Cylinder (up to 6.0 t)
- 88 Ditch Cleaning Bucket with Cylinder (6.0 to 12 t)
- 90 Ditch Cleaning Bucket with Cylinder (11 to 40 t)
- 92 Ditch Cleaning Bucket with Tilt Motor (11 to 40 t)

94 **Special Attachments**

- 96 Trapezoid Bucket
- 98 Clearing Rake
- 100 Auger
- 102 Hydraulic Breaker
- 104 Cone Splitter
- 105 Push Broom/Forklift Broom
- 106 Two-shell universal grabs
- 108 Grading Bucket
- 110 Excavator Spade
- 112 Ripper
- 114 Pallet Fork for excavators

116 **Wheel Loader weight classes**

118 **Wheel Loader Shovels**

- 122 Agriculture Light Material Shovel
- 124 Basic Loading Shovel
- 126 Premium Loading Shovel
- 128 4 in 1 Shovel
- 130 Side dumping shovel
- 131 Rock Shovel
- 132 Light Material Shovel
- 134 Pallet Fork for wheel loaders

136 **Custom Attachements**

137 **Custom components for construction machines**

138 **Steel construction**

139 **Contract manufacturing**

140 **After Sales**

- 140 Wear and Spare Parts
- 141 Service/Warranty
- 142 Regeneration and Repair
- 144 Solutions by Combi Wear Parts

146 **Rädlinger At Coreum**



COMPANY PROFILE

ABOUT RÄDLINGER

Rädlinger Maschinenbau GmbH, based in Cham in the Upper Palatinate, is a family-run, medium-sized company. The company benefits from the close cooperation with Rädlinger Stahlbau GmbH and the experience of the employees, as well as the modern machinery in the plants in Cham and Schwandorf.



Rädlinger is one of the leading suppliers of construction machinery in the German-speaking area. Customers throughout Europe benefit from the patented Rädlinger attachments. Excavator buckets, loading shovels, quick-change systems, rotary motors and other innovative products are developed and manufactured to the highest quality standards.

The company group

The Werner Rädlinger Group employs around 550 people at its headquarters in Cham and at a further six national and international locations. It is active in four areas:

- Steel processing (heavy construction machinery, steel structures and contract manufacturing)
- Flexible pressure pipes
- Electrical engineering with a focus on photovoltaics
- Adult education

rädlinger

27000 m²

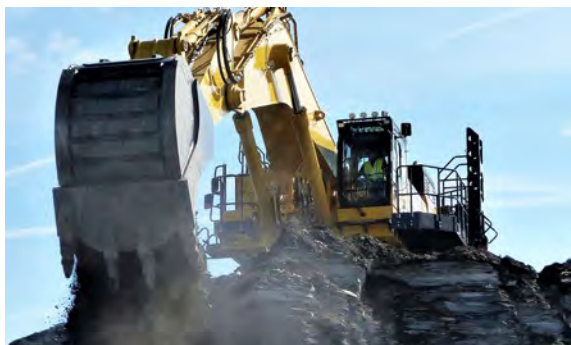
Production
and storage area

Around **30,000** attachments
sold annually

1988 Year of foundation

Our strengths are your advantages:

- » Pragmatic order processing
- » Customer-oriented engineering
- » State-of-the-art production
- » Large inventory
- » Efficient logistics
- » Convincing product quality



CONSTRUCTION MACHINERY EQUIPMENT

A construction machine can only develop its full potential with a high-quality attachment that optimally complements the carrier device.

Performance and efficiency depend not only on the features and the power of the excavator or wheel loader, but crucially on the quality of the equipment.



Innovation & Performance

Making successful products even better - a motto that promotes constant new developments and optimisation ideas.

Therefore, our own planning and development department always keeps up with the times when it comes to technology, materials and software-based design. Always with the aim of maximising the efficiency and lifetime of the attachments.

Product Diversity & Service

Our range of products includes all-round and special tools for a wide range of applications. Efficient series production and a large inventory of attachments, weighing up to 40 tonnes, ensure short delivery times.

In close cooperation with the customer, we also implement special designs and individual customer requests in one-off and series production. Rädlinger is also at your side as a supplier for wear and spare parts, as well as a partner for repairs and regeneration.

Why Rädlinger attachments?

<div>35</div>	<div></div>	<div></div>	<div></div>	<div></div>
Over 35 years of experience	From practice, for practice	Products from the market leader	Attachments for every application	Service team & personal customer contact
<p>Founded in 1988, Rädlinger Maschinenbau GmbH is an experienced manufacturer of high-quality attachments.</p> <p>However, company founder Josef Rädlinger Sr. had been gathering important information since 1963, when he laid the foundation for his construction company.</p>	<p>What does really matter concerning excavator buckets and loading shovels?</p> <p>To this day, application tests and feedback from the field are the basis for new product ideas and the development and optimisation of our products.</p>	<p>With around 30,000 attachments sold per year and a large inventory, we are among the market leaders in Germany.</p> <p>As such, we are constantly developing innovative products - for more efficiency and safety!</p>	<p>Our product range is as wide as the range of our customers' applications.</p> <p>Gardening and landscaping, civil engineering, extraction, demolition or recycling - we have the right tool for you!</p>	<p>Our young, dynamic sales team in-house and in the field is just as available to you as a contact person as our reliable service team!</p> <p>We place great value on personal customer contact!</p>

Competence & Quality

<p>A high-quality product is created when the entire process is geared to this project from the very beginning. This applies to the development of products, the purchase and testing of materials, the production and assembly of components and to quality control.</p> <p>The high level of expertise, know-how and experience of the employees at Rädlinger are just as crucial here as the exclusive use of high-quality materials and high-strength steels.</p> <p>As a company, we are certified according to the high standards of DIN EN ISO 9001:2015 for quality management, our environmental management system (DIN EN ISO 14001:2015), our occupational health and safety management system (DIN EN ISO 45001:2018) and our energy management system (DIN EN ISO 50001:2018). We are also a certified specialist welding company for load-bearing steel components up to execution class EXC 3 in accordance with DIN EN 1090-2.</p>	<p>Our competitive advantage is the indispensable and close linking of experience and knowledge with practice.</p> <p>A high level of awareness for the requirements of various application areas and a keen sense for different materials guide the entire process of product creation from development to optimisation to production.</p> <p>Werner Rädlinger, Managing Director</p>
--	--



rädlinger

**QUICK
COUPLERS**

**TILT
MOTORS**

EQUIPMENT

High-quality attachments are essential, ...

but only in perfect combination with quick coupler, tilt motor and equipment are they able to perform at their peak.

Therefore, what lies between carrier device and attachment is crucial.

Here, we rely on high-quality workmanship and practical solutions to ensure safe, effective and smooth operations.



Quick Coupling Systems:
suitable for all excavator
makes



Rädlinger Tilt 90:
combined with quick coupler



Tilt Motor:
combined with bucket
or quick coupler

Adapters:
Hammer mounting plates
Adapter frames
Adapter plates





RÄDLINGER QUICK COUPLER MS

Application

The mechanical Rädlinger Quick Coupler significantly increases the flexibility of the excavator, as attachments can be changed simply and safely. The attachment is picked up and locked by two mounting claws and locking bolts, which engage in an adapter frame on the attachment. This lock is very easily manually operated with the aid of a socket spanner.

Features

Simple and secure changing of attachments

Combination with Rädlinger Tilt Motor or Rädlinger Tilt 90

Mechanically processed contact surfaces

Compact design

Universally applicable to all different excavator makes

Low maintenance and wear resistant

Compatible with system Lehnhoff

Loading hook



Rädlinger Quick Coupler MS

Type	Operating weight in t	Weight in kg*
MS 01	0.7 - 2.0	20
MS 03	2.0 - 6.0	30
MS 08	5.0 - 12	95
MS 10	10 - 19	200
MS 21	18 - 28	300
MS 25	26 - 40	350
*approx. weight, depending on the respective excavator suspension used		



RÄDLINGER QUICK COUPLER HS

Application

The hydraulic Rädlinger Quick Coupler significantly increases the flexibility of the excavator, as attachments can be changed quickly and safely. The attachment is picked up and locked by two mounting claws and locking bolts, which engage in an adapter frame on the attachment. Locking and unlocking can be conveniently controlled from the cabin.

Features

Quick and secure changing of attachments

Combination with Rädlinger Tilt Motor or Rädlinger Tilt 90

Mechanically processed contact surfaces

Compact design

Universally applicable to all different excavator makes

Low maintenance and wear resistant

Compatible with system Lehnhoff

Visual indicator to check the locked state



The Rädlinger Quick Coupler HS complies with the current safety regulations by utilisation of a rigid catch hook and is certified by DGUV Test Construction Department.

Loading hook

Accessories

- » Hydraulic packages for hose routing
- » Hydraulic mounting kits for single-acting (EW) and double-acting (DW) quick coupler cylinders see ACCESSORIES on page 19



Rädlinger Quick Coupler HS

Type	Operating weight in t	Weight in kg*
HS 01	0.7 - 2.0	22
HS 03EW	1.5 - 4.8	33
HS 03DW	4.8 - 6.0	34
HS 08	5.0 - 12	100
HS 10	10 - 19	210
HS 21	18 - 28	320
HS 25	26 - 40	375

*approx. weight, depending on the respective excavator suspension used



Rädlinger HS 08 Solidlink

Application

The fully hydraulic Rädlinger HS 08 Solidlink significantly increases the flexibility of the excavator, as attachments can be changed quickly and safely fully hydraulically.

Features

Compatible with the Lehnhoff system

Fully hydraulic quick coupler thanks to Solidlink coupling block

Mounting of attachments with HS 08 quick coupler also possible without Solidlink

Coupling with 3 x 3/8 inch and 2 x 1/2 inch

The Solidlink coupling block allows up to five hydraulic lines to be coupled automatically

Oil flow rate 3/8 inch in l/min	58
Oil flow rate 1/2 inch in l/min	140
Maximum permissible continuous flow 3/8 inch in l/min	80
Maximum permissible continuous flow 1/2 inch in l/min	210
Maximum continuous working pressure in MPa 3/8 inch	38
Maximum continuous working pressure in MPa 1/2 inch	38

RÄDLINGER SWA SOLIDLINK

Application

The fully hydraulic Rädlinger SWA Solidlink significantly increases the flexibility of the excavator, as attachments can be changed quickly and safely. The attachment is picked up and locked by two mounting claws and locking bolts, which engage in an adapter frame on the attachment. Locking and unlocking can be conveniently controlled from the cab.

Features

Quick and secure changing of attachments

Compatible with SWA Likufix system

Solidlink block for fully hydraulic control

Universally applicable to all different excavator makes

Loading hook

Interchangeable half-shells

Bolt set for stick and connecting link

Universal control for hydraulic Rädlinger SWA

Necessary machine-side options

- » Kit for pressure switch for proportional control
- » Voltage converter (12V->24V) for installation at 12V operating voltage

Accessories

- » Signal contacts (5-pin) Solid Link
- » Signal contacts (14-pin) Solid Link
- » Cable set for second control unit
- » Protection bar



Rädlinger SWA Solidlink

Type	Operating weight in t	Weight in kg*
SWA33	8 - 19	144
SWA33-9	8 - 19	146
SWA48	15 - 40	262
SWA66	23 - 40	468
SWA77	44 - 66	756
*approx. weight, depending on the respective excavator suspension used		



RÄDLINGER QUICK COUPLER ALPEN

Application

The Rädlinger hydraulic quick coupler Alpen significantly increases the flexibility of the excavator, as attachments can be changed quickly and safely. The attachment is picked up and locked by two mounting claws and locking bolts, which engage in an adapter frame on the attachment. Locking and unlocking can be conveniently controlled from the cab.

Features

Quick and safe changing of attachments

Combination with Rädlinger Tilt Motor or Rädlinger Tilt 90

Compact design

Universally usable for all excavator makes

Low-maintenance and wear-resistant

Visual indicator to check the locked state



Rädlinger Quick Coupler Alpen

Type	Operating weight in t	Weight in kg*
A03	1,0 - 3,5	42
A10	2,8 - 10	82
A18**	10 - 16	262
*approx. weight, depending on the respective excavator suspension used		
**available from the end of 2025		



RÄDLINGER TILT 90

Application

With the vertical tilt function of the Rädlinger Tilt 90 by $2 \times 90^\circ$, work is possible in the most confined spaces. At the same time, the tilt motor expands the areas of use and performance of excavators as well as the efficiency of attachments.

Features

Tilt movement $2 \times 90^\circ$

Overload protection through double pressure relief valve

Protection against pressure loss on the excavator side by double pilot operated check valve

Maintenance-free and wear resistant

Low installation height

Size optimised for the respective carrier device

Can be mounted on various quick coupling systems

Hose-free connection to quick coupler via integrated rotary feedthrough

Protected hydraulic connections

Kink protection and optimised hose routing through Collecting Unit

Optional hydraulic packages for hose routing for a wide range of carrier devices

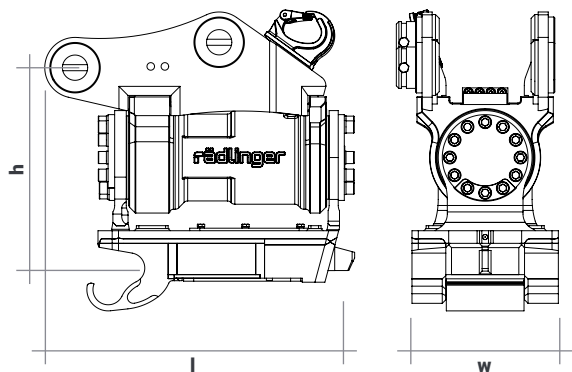
Optional: hydraulic mounting kit for single-acting (EW)/double-acting (DW) quick coupler cylinders

Loading hook



Dimensions* (w × h × l) in mm	Weight solo motor in kg	Torque in Nm (at 210 bar)	Holding torque in Nm approx.	Oil require- ment in ccm/1°	Max. operating pressure in bar	Set-up recommendation (Compatible with Rädlinger Quick Coupler)	Weight of complete unit in kg
Rädlinger Tilt 390 (1.5 - 2.7 t)							
180 × 300 × 378	27	1080	2800	1,43	210	HS 01/MS 01 HS 03EW/MS 03	from 55
Rädlinger Tilt 490 (2.8 - 3.8 t)							
200 × 304 × 425	38	1880	4830	2,41	210	HS 03EW/MS 03	from 86
Rädlinger Tilt 590 (3.8 - 6.0 t)							
200 × 330 × 510	45	2600	7100	3,35	210	HS 03EW (up to 4.8 t)/ HS 03DW/MS 03	from 99
Rädlinger Tilt 790 (6.0 - 9.0 t)							
200 × 390 × 585	90	4320	14200	5,23	210	HS 03DW/MS 03 HS 08/MS 08	from 178
Rädlinger Tilt 1090 (8.0 - 12 t)							
290 × 625 × 636	143	8200	22800	10,5	210	HS 08/MS 08	from 304
Rädlinger Tilt 1490 (12 - 16 t)							
385 × 612 × 710	207	15300	48600	20,53	210	HS 10/MS 10	from 523

*The exact dimensions depend on the carrier and the quick coupler used.





RÄDLINGER TILT MOTOR

Application

With the Rädlinger Tilt Motor, attachments can be tilted by $2 \times 45^\circ$. Depending on size, a combination with either buckets or quick couplers is possible. This increases the performance of excavators as well as the efficiency of the attachments.

Features

Tilt movement $2 \times 45^\circ$

Overload protection through double pressure relief valve

Screwed and therefore exchangeable suspension

Protected hydraulic connections

Maintenance-free and wear resistant

High holding and turning torques

Combinations with other attachments possible

Extra equipment

- » Special seal to protect the standard seal of the motor for use underwater or in fine sandy soils on request.



Dimensions (w × h × l) in mm	Weight in kg	Tilt angle (mecha- nically limited)	Torque in Nm (at 150 bar)	Holding torque in Nm approx.	Oil requirement in ccm/1°	Operating pressure in bar	Max. opera- ting pressure (pressure relief valve) in bar
Tilt Motor Class I (11 - 15 t)							
260 × 266 × 350	128	90°	8500	16000	13.88	150	180
Tilt Motor Class II (15 - 22 t)							
310 × 363 × 368	185	90°	16000	30000	24.78	150	180
Tilt Motor Class II S (19 - 23 t)							
346 × 363 × 368	193	90°	16000	30000	24.78	150	180
Tilt Motor Class III L (23 - 26 t)							
362 × 371 × 420	237	90°	19500	38000	29.07	150	180
Tilt Motor Class III (23 - 29 t)							
365 × 408 × 471	326	90°	23000	43000	37.67	150	180
Tilt Motor Class IV (operating weight on request)							
405 × 448 × 540	460	90°	33000	62000	55.12	150	180
Tilt Motor Class V (operating weight on request)							
455 × 458 × 635	690	90°	47000	90000	83.17	150	180



TILT MOTOR WITH QUICK COUPLING SYSTEM

Application

By combining the tilt motor and quick coupling system, the advantages of the tilt motor can be used for several attachments. Tools of all kinds can be changed quickly and easily and thus benefit from the 2 x 45° tilt function.

Features

Can be mounted on various quick coupling systems starting at 11 tonnes

For direct mounting or with adapter frame

Slim design

Protected hydraulic connections

Low maintenance (depends on Quick Coupler) and wear resistant



ACCESSORIES

MOUNTING KIT FOR HYDRAULIC QUICK COUPLERS

Application

If the excavator does not have a quick coupler control, the machine can be retrofitted with a Rädlinger mounting kit for single-acting (EW) or double-acting (DW) quick couplers.



Features

Meets requirements of current safety regulations

Certified by DGUV Test Construction Department

Compact design

Hydraulic mounting kit DW

on the excavator side for double-acting quick coupler cylinder



Hydraulic mounting kit EW

on the excavator side for single-acting quick coupler cylinder



ACCESSORIES

HOSING PACKAGES

Application

Depending on the machine type, the hosing to the Rädlinger Tilt 90 can be on the inside or outside.

Hydraulic package
for outside hosing



Hydraulic package
for inside hosing



Features

Deflection block on dipper arm

Protected hose guide between arm and linkage

Features

Possibility of hose guidance through holding unit on the deflector



HAMMER MOUNTING PLATES/ADAPTER FRAMES/ADAPTER PLATES

Application

Hammer mounting plates, adapter frames and adapter plates are used as connecting parts between attachments and quick couplers.



Features

Compatible with various quick coupling systems

Welded or bolted design

Matched to excavator and attachment



EXCAVATOR WEIGHT CLASSES

Class	Operating weight (t)
01	up to 1.0
02	1.0 - 1.8
03	1.6 - 2.6
04	2.6 - 3.5
05	3.5 - 5.0
06	4.8 - 6.0
07	6.0 - 8.0
08	8.0 - 10.0
09	10.0 - 12.0
11	11.0 - 15.0
15	15.0 - 19.0
19	19.0 - 23.0
23	23.0 - 29.0
29	29.0 - 40.0
40	40.0 - 55.0
50	55.0 - 75.0
70	75.0 - 100
100	100 - 130
130	130 - 185
185	185 - 260

Our attachments are divided into classes to help you find the right product for your construction machine. Simply contact our sales team for a no-obligation, detailed consultation and recommendation.



A close-up photograph of a heavy-duty backhoe bucket. The bucket is dark blue or black, showing signs of wear and some dirt. A small, rectangular Rädlinger logo is visible on the side of the bucket. The bucket is attached to a hydraulic arm, with various bolts and mechanical components visible. The background is a light, out-of-focus surface.

rädlinger

BACKHOE BUCKETS

Allrounder for every standard application.

Our constructions are optimised for their intended use in the field and they cover a wide range of applications in weight classes of approx. 0.8 to 40 tonnes:

From gardening and landscaping to working with medium-heavy soils or canal works - here you will find the suitable product.

SERIES FEATURES



Example: Standard backhoe bucket

THE CORRECT BUCKET

Your excavator can only be as good as its bucket!

THE RIGHT CLASSIC FOR YOUR EXCAVATOR

The classic backhoe bucket is the proven all-rounder on excavators. Our products cover a wide range of applications and machine classes.



Backhoe Bucket with Teeth (from page 32)

Teeth make it easier to penetrate the ground. We offer a wide range of tooth systems - welded, bolted or with innovative interchangeable mechanisms.

Backhoe Bucket without Teeth (from page 38)

Ideal for creating trenches and shafts or for loading bulk materials.



Backhoe Bucket X-TREME (page 44)

The standard for heavy-duty use: Our backhoe bucket X-TREME is optimised for heavy-duty applications with increased wear.

Backhoe Bucket with Tilt Motor or Cylinder (page 56)

The swivelling function makes it possible to work on slopes and remove the subgrade, regardless of the excavator's inclination, in addition to creating excavation pits.



SPECIAL BACKHOES

An all-rounder is not always the right tool - we have optimised buckets for various special applications.

Sewer Bucket
(page 50)



Excavation Bucket
Landscaping (page 52)



Skeleton Bucket
(page 58)



Cable Bucket
(page 48)



Our experienced design department also designs customised products in close consultation with the customer, if required.

Backhoe Bucket X-TREME Alpen (11 to 40 t)
(page 46)





STANDARD BACKHOE BUCKET (UP TO 6.0 T)

Application

Based on its high performance and bucket quality, the backhoe bucket for mini-excavators is most suitable for picking up, transporting and pouring out soil and medium-heavy ground in gardening and landscaping and on construction sites with smaller construction areas.

Features

Equipped with mounting system Radlog as standard

Bolt-on tooth removable for cable work (exception: class 01 with welded tooth)

Very stable and robust design

From class 04 base in HB400

Nose for bucket transport

Extra equipment

» Front-insert blade with replacement teeth



Cutting width in mm	Capacity ISO/L	Teeth	Weight in kg
Class 01 (up to 1.0 t)			
220	12	2	23
300	17	3	25
400	23	3	26

Class 02 (1.0 - 1.8 t)			
220	23	2	38
250	26	2	32
300	32	3	37
400	45	3	42
500	57	4	49
600	70	4	55

Class 03 (1.6 - 2.6 t)			
250	37	2	62
300	46	3	52
400	64	3	60
500	83	4	68
600	102	4	76
800	135	5	96

Cutting width in mm	Capacity ISO/L	Teeth	Weight in kg
Class 04 (2.6 - 3.5 t)			
250	51	2	70
300	58	3	64
400	82	3	73
500	106	4	82
600	130	4	91
800	179	5	109

Class 05 (3.5 - 5.0 t)			
300	72	2	72
400	103	3	84
500	134	4	96
600	165	4	106
700	196	5	118
800	227	5	128

Class 06 (4.8 - 6.0 t)			
300	77	2	79
400	112	3	92
500	146	4	105
600	180	4	115
800	248	5	139
1000	316	5	160



STANDARD BACKHOE BUCKET (6.0 TO 12 T)

Application

The Standard backhoe bucket provides the user with a versatile all-round device for picking up, transporting and pouring out soil and medium-heavy ground.

Features

Robust, high-strength bucket

Equipped with mounting system Radlog as standard

Fitted by default with Bofors loader tooth system

Base in HB400

Side cutting edge in HB400

Nose for bucket transport

Extra equipment

» Front-insert blade with replacement teeth



Cutting width in mm	Capacity ISO/L	Teeth	Weight in kg
Class 07 (6.0 - 8.0 t)			
325	105	2	119
400	136	3	132
500	176	3	146
600	218	4	165
800	299	4	194
900	339	5	213
1000	380	5	228

Class 08 (8.0 - 10 t)			
325	127	2	133
400	164	3	148
500	213	3	164
600	263	4	184
800	362	4	218
900	411	5	239
1000	460	5	256

Class 09 (10 - 12 t)			
325	136	2	151
400	177	3	167
500	232	3	186
600	287	4	209
800	396	4	248
900	451	5	271
1000	506	5	290
1200	616	6	333



STANDARD BACKHOE BUCKET (11 TO 40 T)

Application

Weight optimisation ensures higher performance, best filling and emptying behaviour and less wear. It is suitable for picking up, transporting and pouring out soil and medium-heavy ground.

Features

Blade in HB400 with tooth system

Blade in HB500 without tooth system

Lower side cutting edge and side protection combined, in HB400

Base as standard in HB400 and protruding to the side

CAT J-System or CWP C-Rex

Extra equipment

- » Front-insert blade with replacement teeth
- » All standard toothed systems available on request



Cutting width in mm	Capacity ISO/L	Teeth	Weight in kg
Class 11 (11 - 15 t)			
400	190	2	264
500	260	3	315
600	340	3	344
800	490	4	414
1000	650	4	471
1200	810	5	540

Cutting width in mm	Capacity ISO/L	Teeth	Weight in kg
Class 23 (23 - 29 t)			
600	490	3	634
800	710	4	758
1000	940	4	860
1200	1180	5	983
1400	1420	5	1085
1600	1660	6	1208

Class 15 (15 - 19 t)			
400	230	2	320
500	310	3	361
600	390	3	403
800	570	4	482
1000	760	4	549
1200	950	5	630
1400	1140	5	697

Class 29 (29 - 40 t)			
800	860	3	1011
1000	1140	3	1143
1200	1430	4	1314
1400	1730	4	1446
1600	2030	5	1616
1800	2330	5	1791

Class 19 (19 - 23 t)			
600	440	3	482
800	640	4	576
1000	850	4	657
1200	1060	5	752
1400	1270	5	836
1600	1480	6	931



STANDARD BACKHOE BUCKET WITHOUT TEETH (6.0 T)

Application

The Standard backhoe bucket without Teeth is perfectly suited for constructing pipeline trenches, shafts and the field of network construction. Furthermore, it is used for loading loose bulk materials.

Features

Equipped with mounting system Radlog as standard

From class 04 base in HB400

Side cutting edge in HB400

Nose for bucket transport

Optimised opening angle for better parting

Protruding blade



Cutting width in mm	Capacity ISO/L	Weight in kg
Class 01 (up to 1.0 t)		
220	14	22
300	17	24
400	25	27

Class 02 (1.0 - 1.8 t)		
220	22	36
250	26	32
300	33	35
400	48	41
500	64	47
600	80	53

Class 03 (1.6 - 2.6 t)		
250	33	63
300	47	50
400	70	57
500	94	65
600	119	72

Class 04 (2.6 - 3.5 t)		
250	43	72
300	56	67
400	83	75
500	112	84
600	142	93

Cutting width in mm	Capacity ISO/L	Weight in kg
Class 05 (3.5 - 5.0 t)		
300	63	71
400	95	81
500	129	91
600	165	101
700	201	111

Class 06 (4.8 - 6.0 t)		
300	75	80
400	112	92
500	151	104
600	193	115
800	279	138



STANDARD BACKHOE BUCKET WITHOUT TEETH (6.0 TO 12 T)

Application

The Standard backhoe bucket without Teeth is perfectly suited for constructing pipeline trenches, shafts and the field of network construction. Furthermore, it is used for loading loose bulk materials.

Features

Equipped with mounting system Radlog as standard

Base in HB400

Side cutting edge in HB400

Nose for bucket transport

Extra equipment

» Profile blade



Cutting width in mm	Capacity ISO/L	Weight in kg
Class 07 (6.0 - 8.0 t)		
325	91	108
400	122	118
500	165	132
600	210	146
800	305	174
900	354	188

Class 08 (8.0 - 10 t)		
325	114	140
400	152	144
500	206	161
600	263	178
800	373	212
900	445	229
1000	490	248

Class 09 (10 - 12 t)		
325	123	152
400	165	166
500	225	185
600	286	205
800	418	245
900	486	265
1000	555	285
1200	693	325



STANDARD BACKHOE BUCKET WITHOUT TEETH (11 TO 40 T)

Application

Weight optimisation ensures higher performance, best filling and emptying behaviour and less wear. It is suitable for picking up, transporting and pouring out soil and medium-heavy ground.

Features

Blade in HB500 without tooth system

Lower side cutting edge and side protection combined, in HB400

Base as standard in HB400 and protruding to the side

Available with all well-established quick coupler adapter frames

Extra equipment

» Profile blade



Cutting width in mm	Capacity ISO/L	Weight in kg
Class 11 (11 - 15 t)		
400	190	248
500	260	260
600	340	282
800	490	335
1000	650	387
1200	810	440

Cutting width in mm	Capacity ISO/L	Weight in kg
Class 23 (23 - 29 t)		
600	490	561
800	710	652
1000	940	751
1200	1180	850
1400	1420	949
1600	1660	1048

Class 15 (15 - 19 t)		
400	230	306
500	310	328
600	390	354
800	570	419
1000	760	484
1200	950	549
1400	1140	614

Class 29 (29 - 40 t)		
800	860	886
1000	1140	1016
1200	1430	1146
1400	1730	1276
1600	2030	1407
1800	2330	1537

Class 19 (19 - 23 t)		
600	440	447
800	640	517
1000	850	594
1200	1060	672
1400	1270	748
1600	1480	825



BACKHOE BUCKET X-TREME (11 TO 40 T)

Application

Designed for heavy-duty use: The Backhoe bucket X-TREME combines the experience gained from hundreds of individually manufactured backhoe buckets for the toughest applications. This has resulted in a standardised bucket for hard soils and other tasks causing increased wear and tear.

Features

Reinforcing corners on the interface

With CWP tooth system as standard

Robust tooth system with HD-tips

Stronger blade compared to the standard backhoe bucket

Wear strips in HB500

Side and base completely made of HB400

Stronger side cutting edges and side protection combined

Bigger wall thickness of the bucket box compared to the standard backhoe bucket



Cutting width in mm	Capacity ISO/L	Weight in kg
Class 11 (11 - 15 t) with CWP C-Rex R-14		
600	340	384
800	490	487
1000	650	580
1200	810	663

Class 15 (15 - 19 t) with CWP C-Rex R-18		
600	390	422
800	570	535
1000	760	637
1200	950	765
1400	1140	866

Class 19 (19 - 23 t) with CWP C-Rex R-18		
600	440	606
800	640	769
1000	850	915
1200	1060	1046
1400	1270	1162
1600	1480	1265

Cutting width in mm	Capacity ISO/L	Weight in kg
Class 23 (23 - 29 t) with CWP C-Rex R-23		
600	490	722
800	710	918
1000	940	1092
1200	1180	1248
1400	1420	1387
1600	1660	1510
1800	1900	1784

Class 29 (29 - 40 t) with CWP C-Rex R-29		
1000	1140	1403
1200	1430	1604
1400	1730	1782
1600	2030	1940
1800	2330	2292



BACKHOE BUCKET X-TREME ALPEN (11 TO 40 T)

Application

Designed for heavy-duty use in stony ground: the X-TREME Alpen backhoe bucket is a modified version of the X-TREME backhoe bucket, designed to meet the demands of mountainous terrain. The forward-positioned cutting edge makes it easier to move large stones, and the bucket has an extra-strong armoured plating.

Features

Reinforcing corners on the interface

With CWP tooth system as standard

Robust tooth system with HD-tips

Stronger blade compared to the standard backhoe bucket

Wear strips in HB500

Side and base completely made of HB400

Stronger side cutting edges and side protection combined

Bigger wall thickness of the bucket box compared to the standard backhoe bucket

Stone laying noses



Cutting width in mm	Capacity ISO/L	Weight in kg
Class 11 (11 - 15 t) with CWP C-Rex R-14		
600	282	438
800	407	555
1000	540	661
1200	672	756

Class 15 (15 - 19 t) with CWP C-Rex R-18		
600	324	481
800	473	610
1000	631	726
1200	789	872
1400	946	987

Class 19 (19 - 23 t) with CWP C-Rex R-18		
600	365	691
800	531	877
1000	706	1043
1200	880	1192
1400	1054	1325
1600	1228	1442

Cutting width in mm	Capacity ISO/L	Weight in kg
Class 23 (23 - 29 t) with CWP C-Rex R-23		
600	407	823
800	589	1047
1000	780	1245
1200	979	1423
1400	1179	1581
1600	1378	1721
1800	1577	2034

Class 29 (29 - 40 t) with CWP C-Rex R-29		
1000	946	1599
1200	1187	1829
1400	1436	2031
1600	1685	2212
1800	1934	2613



CABLE BUCKET

Application

The special bucket shape corresponds exactly to the specified requirements in fibre optic expansion. The buckets are designed to satisfy current requests from tenders as well as market requirements. Minimally wide and yet sufficiently deep trenches can be made. In addition, the bucket is suitable for laying irrigation lines and other lines in gardening and landscaping, as it helps to avoid field damage.

Features

Blade in HB500

Equipped with mounting system Radlog as standard

Self-cleaning due to curved base

Drainage holes



Cutting width in mm	Digging depth in mm
Class 01 (up to 1.0 t)	
120	700

Class 02 (1.0 - 1.8 t)	
120	700

Class 03 (1.6 - 2.6 t)	
120	750

Class 04 (2.6 - 3.5 t)	
120	750

Class 05 (3.5 - 5.0 t)	
120	750

Class 06 (4.8 - 6.0 t)	
120	750

Class 07 (6.0 - 8.0 t)	
120	800

Class 08 (8.0 - 10 t)	
120	800

Class 09 (10 - 12 t)	
120	800



SEWER BUCKET

Application

The bucket shape is especially suitable for operation in sewers and for shoring. Even sewer areas which are deep and difficult to access can be reached.

Features

Blade in HB400 with tooth system

Blade in HB500 without tooth system

Lower side cutting edge and side protection combined, in HB400

Base as standard in HB400 and protruding to the side for highest durability

Available with all well-established quick coupler adapter frames

Extra equipment

- » Ideally equipped with single-bar tooth-holder system to create a flat base
- » Front-insert blade



Cutting width in mm	Capacity ISO/L
Class 11 (11 - 15 t)	
600	330
800	490

Class 15 (15 - 19 t)	
600	385
800	542

Class 19 (19 - 23 t)	
600	415
800	620

Class 23 (23 - 29 t)	
600	465
800	675
1000	893



EXCAVATION BUCKET LANDSCAPING

Application

Landscaping often requires brute force: this is exactly what the Excavation Bucket delivers. Thanks to its compact shape and very small digging radius, it achieves maximum breaking forces for excavating and lifting. It is also an ideal partner for moving heavy rocks and loosening hardened soils.

Features

Extremely oversized plate thickness and tooth system design in relation to the bucket dimension

Tooth holders at the corners angled outwards by 15°

Robust, generously dimensioned noses for moving

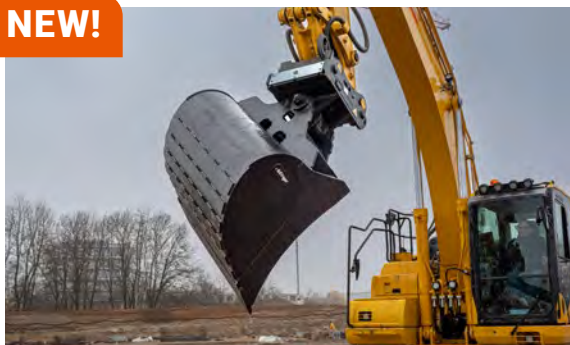
Special reinforcement stage in the engagement area (chocky bars)

CWP tooth system as standard



Cutting width in mm	Capacity ISO/L	Teeth
Class 01 (up to 1.0 t)		
230	16	3
Class 02 (1.0 - 1.8 t)		
230	16	3
Class 03 (1.6 - 2.6 t)		
260	31	2
Class 04 (2.6 - 3.5 t)		
260	31	2
Class 05 (3.5 - 5.0 t)		
260	31	2
Class 06 (4.8 - 6.0 t)		
260	31	2
Class 07 (6.0 - 8.0 t)		
370	74	2
Class 08 (8.0 - 10 t)		
370	74	2
Class 09 (10 - 12 t)		
370	74	2

NEW!



BACKHOE BUCKET WITH CYLINDER (11 TO 40 T)

Application

The Backhoe bucket is used in hydraulic construction and landscaping. In addition to excavating building pits, the tilt function enables work on embankments and the removal of the subgrade, independent of the excavator standing angle.

Features

Ideally combines the shape of the conventional backhoe bucket and tiltable ditch cleaning bucket

Base in HB400

Blade in HB500

Transverse wear strips

Tilt movement $2 \times 45^\circ$

Extra equipment

- » Wear strips
- » Load retaining valve
- » Reversible screw-on blade
- » GPS mount



Cutting width in mm	Capacity ISO/L	Weight in kg
Class 11 (11 - 15 t) (available from July 2025)		
1200	540	574
1400	645	638
1600	750	695

Cutting width in mm	Capacity ISO/L	Weight in kg
Class 23 (23 - 29 t) (available from April 2025)		
1400	1250	1242
1600	1450	1296
1800	1650	1350

Class 15 (15 - 19 t) (available from July 2025)		
1200	680	646
1400	800	800
1600	920	920

Class 29 (29 - 40 t) (available from July 2025)		
1600	2000	1682
1800	2300	1835
2000	2600	1952

Class 19 (19 - 23 t) (available from April 2025)		
1400	990	1018
1600	1140	1096
1800	1290	1162



BACKHOE BUCKET WITH TILT MOTOR

Application

The Backhoe Bucket with Tilt Motor is used in hydraulic construction and landscaping. In addition to excavating building pits, the tilt function enables work on embankments and the removal of the subgrade, independent of the excavator standing angle.

Features

Ideally combines the shape of the conventional backhoe bucket and tiltable ditch cleaning bucket

Blade and transverse wear strips in HB500

Problem-free, safe and maintenance-free operation through use of the tilt motor

Tilt movement $2 \times 45^\circ$

2.5° tapering per side

Extra equipment

- » Bucket body in HB400
- » Reversible screw-on blade
- » Special seal
- » Load retaining valve
- » GPS mount



Cutting width in mm	Capacity ISO/L	Weight in kg
Tilt Motor Class I (11 - 15 t)		
1000	435	660
1200	540	715
1400	645	770
1600	750	830

Cutting width in mm	Capacity ISO/L	Weight in kg
Tilt Motor Class III L (23 - 26 t)		
1400	1250	1315
1600	1450	1366
1800	1650	1418
2000	1850	1470

Tilt Motor Class II S (15 - 19 t)		
1000	560	836
1200	680	895
1400	800	955
1600	920	1014

Tilt Motor Class III (23 - 29 t)		
1400	1420	1572
1600	1630	1632
1800	1850	1691
2000	2080	1751

Tilt Motor Class II S (19 - 23 t)		
1200	840	1091
1400	990	1173
1600	1140	1254

Tilt Motor Class IV (29 - 40 t)		
1400	1700	2365
1600	2000	2500
1800	2300	2635
2000	2600	2770



SKELETON BUCKET

Application

This special tool is exceptionally suited for loading and sorting work. Skeleton buckets are mainly used for filtering out rock or paving stones and for recycling building rubble.

Features

Up to Class 09 equipped with mounting system Radlog as standard

Up to Class 09 with nose for bucket transport

Blade HB400 with tooth system

Side cutting edge in HB400

Versatile for all-round use

Equipped with CAT J-System, CWP C-Rex or bolt-on tooth

Up to Class 09 skeleton base in HB400

From Class 11 optionally with skeleton base or round bars in HB400

Standardised meshes to ensure availability by stock at hand

Extra equipment

» Front-insert blade with replacement teeth



Class	Cutting width in mm	Capacity ISO/L
Model with skeleton base		
02	500	57
03	800	140
04	800	179
05	800	227
06	800	248
07	800	299
08	1000	460
09	1200	616

Class	Cutting width in mm	Capacity ISO/L
Model with skeleton base or round bars		
11	1000	650
11	1200	810
15	1200	950
15	1400	1140
19	800	640
19	1000	850
19	1200	1060
19	1400	1270
23	1200	1180
23	1400	1420
23	1600	1660
29	1600	2030

rädlinger

MINING BUCKETS



Strong partner in the mining industry

For these special buckets, we only use high-quality materials and high-strength steels. This is how we achieve the extremely robust construction with relatively low weight.

This makes them extremely resistant for their use in quarries, gravel pits and mining, for example.

SERIES FEATURES

Size classes
from 19 to 150

Blade and side
cutting edge made of
special steel

Slightly flared tooth
holders on the
corners and backward
tapering bucket body
for optimal cut

Side protection and
wear strips in
HB400 or HB500

Custom manufacturing and
equipment with a wide variety
of tooth systems and blades
possible

Example: Rock Bucket

THE RIGHT MINING BUCKET

Your excavator is only as good as its bucket!

STRONG BUCKETS FOR TOUGH APPLICATIONS

When it comes to extracting raw materials and building materials, the time has come for the really big excavators and wheel loaders. Construction machines with operating weights of around 50 tonnes are among the lightweights in this field of use. The material that the giants pick up and load, or even mine directly, is correspondingly heavy.



Backhoe Bucket Individual/Heavy (page 64)

A popular product for heavy-duty applications - customised to your needs.

Rock Bucket (page 66)

The perfect partner for the mining industry. Its special armouring and optimised side cutting edges make it suitable for even the most demanding applications.



Ripper Bucket (page 69)

The Ripper Bucket is suitable for the heaviest demolition jobs with extreme breakout forces and for direct extraction as an alternative to traditional drilling and blasting.

This application demands everything from construction machines and attachments. Excavator buckets come into direct contact with the sand, gravel and rock and therefore need to be particularly tough.



Stone Placing Bucket
(page 68)

Our experienced design department also designs customised products in close consultation with the customer, if required.



Backhoe Bucket X-TREME (11 to 40 t)
(page 44)



Ripper
(page 112)



Backhoe Bucket X-TREME Alpen (11 to 40 t)
(page 46)



BACKHOE BUCKET INDIVIDUAL/HEAVY

Application

This backhoe bucket is a popular product among professional users in the mining and demolition industry for heavy-duty use with high break-out forces and excessive wear.

Features

With CWP tooth system as standard

Extra equipment

- » Bucket body in HB400
- » Loading hook
- » Ball groove
- » Various reinforcement stages
- » Welded blade reinforcement in front and side cutting edge reinforcement below
- » Intermediate sizes and special designs available on request



Cutting width in mm	Capacity ISO/L	Teeth
Class 19 (19 - 23 t)		
400	340	2
500	450	3
600	560	3
800	770	4
1000	990	4
1200	1210	5
1400	1430	5
1600	1640	6

Class 23 (23 - 29 t)		
600	830	3
800	1100	4
1000	1380	4
1200	1650	5
1400	1930	5
1600	2200	6
1800	2480	6



ROCK BUCKET

Application

Like the Backhoe bucket individual/heavy the Rock bucket is the perfect partner for mining. With its special reinforcement and optimised side cutting edges, it is suited for even the most demanding applications.

Features

Welded blade reinforcement in front and side cutting edge reinforcement below

Heavy-duty and deep side cutting edges for power transmission from the box to the blade

With CWP tooth system as standard



Cutting width in mm	Capacity ISO/L	Teeth
Class 29 (29.0 - 40.0 t)		
800	1260	3
1000	1580	3
1200	1900	4
1400	2220	4
1600	2540	5
1800	2860	5

Class 40 (40.0 - 50.0 t)		
1000	1790	3
1200	2150	4
1400	2510	4
1600	2870	4
1800	3230	5
2000	3590	5

Cutting width in mm	Capacity ISO/L	Teeth
Class 50 (50.0 - 70.0 t)		
1400	3190	4
1600	3640	4
1800	4100	4
2000	4550	5
2200	5000	5
2400	5460	6

Class 70 (70.0 - 100 t)		
1400	4010	3
1600	4590	4
1800	5170	4
2000	5730	4
2200	6300	5
2400	6870	5
2600	7450	5

Class 100 (100 - 130 t)		
Cutting width and capacity in coordination		



STONE PLACING BUCKET

Application

The Stone placing bucket is especially characterised by its extremely far protruding cutting edge. As a result, the optimal pick-up and placement of stones, stone blocks and ashlar is possible without any problems and canting. We always tailor the exact version to the customer's needs.

Features

Far forward-protruding blade

Side cutting edge recessed far back

Base-sided fitting of stone laying noses for the fine placement of stones

Extremely robust construction made of high-quality materials

Welded side cutting edge reinforcement below

Heavy-duty and deep side cutting edges for power transmission from the box to the blade

With CWP tooth system as standard





RIPPER BUCKET

Application

The Ripper bucket is suitable for the heaviest tear-out tasks with extreme break-out forces and for direct extraction - with increasing restrictions in blasting operations - as an alternative to traditional drilling and blasting operations. We always tailor the exact design to the customer's needs.

Features

Similar to Rock bucket but with thicker walling and stronger tooth system

Extremely robust construction design and low net weight through the use of high-quality materials and high-strength steels

Welded blade reinforcement in front and side cutting edge reinforcement below

Heavy-duty and deep side cutting edges for power transmission from the box to the blade

Reinforcing rib in the centre

Extremely protruding central tooth or double tip acts as a ripper tooth

With CWP tooth system as standard

Ripper Bucket Class	Tooth System
40 (up to 45.0 t)	All standard tooth systems available on request. Central tooth one size bigger than outer teeth.
50 (up to 65.0 t)	
70 (up to 90.0 t)	
70 (up to 120 t)	
130 (up to 185 t)	
130 (up to 260 t)	



rädlinger

DEMOLITION BUCKETS

The experts for individual requirements in demolition and recycling.

In terms of construction, material selection and wear protection, these buckets perfectly meet the high demands of demolition and recycling. For optimum filling, penetration and digging behaviour, the products are specially tailored to the individual purposes of the industry.

SERIES FEATURES

Size classes
from class 23

Flared tooth
holders on the
corners as well as
backward tapering
bucket body for
optimal cut

Additional
reinforcement
stages for extended
applications possible

Ideal and harmonious basic structure and shaping
of the supporting parts ensure perfect power flow
from the tooth tip to the bucket suspension, the
interface to the machine.

Example: Foundation bucket

EVERYTHING FOR DEMOLITION AND RECYCLING

Special challenges require the best tools!

OUR SPECIALISTS

Our trio for demolition: Foundation Bucket, Excavation Bucket and Universal Bucket for demolition and recycling. These three buckets have been specially developed for the demands on demolition sites and complement each other perfectly.



Foundation Bucket (page 75)

Ideal for demolition work: Lifting foundations, moving large parts, loosening broken foundation parts, pulling foundations or for ceiling breakthroughs.



Excavation Bucket (page 76)

The compact shape and a very small digging radius provide maximum breaking forces for digging and lifting operations. Also an ideal partner for moving massive boulders.



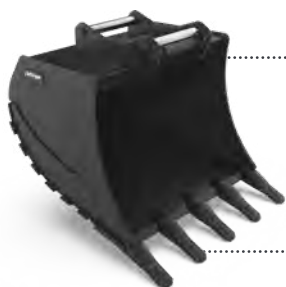
Universal Bucket for Demolition and Recycling (page 74)

Unbeatable for loading all materials for recycling and with special features adapted for demolition.

Nowadays, building demolition is usually carried out by highly specialised excavators with high precision and speed. Accuracy is particularly important because most of the demolition material is destined for recycling and must be well sorted before it leaves the site. Attachments optimised for this application play an important role.

MORE PRODUCTS

These products are also used in other industries, but are nevertheless ideal tools for demolition and recycling.



Backhoe Bucket X-TREME (page 44)

Designed for tough use: The Backhoe Bucket X-TREME is a standardised bucket for high-wear tasks.



Skeleton Bucket (page 58)

This special tool is ideal for loading and sorting. The round bars prevent the material from wedging.

Our experienced design department also designs customised products in close consultation with the customer, if required.



Stone Placing Bucket (page 68)

The Stone Placing Bucket is ideal for picking up and placing stones, stone blocks and ashlar without tilting.



UNIVERSAL BUCKET FOR DEMOLITION AND RECYCLING

Application

Unrivalled in loading all materials to be supplied to recycling: demolition waste, dismantled material, excavated material, building rubble, flotsam.

Features

Additional wear tips and blades between the teeth

Reinforced bucket interface

Reinforcement of the engagement area of the side cutting edges

With CWP tooth system as standard



Cutting width in mm	Capacity ISO/L	Teeth
Class 29 (29 - 40 t)		
1600	2300	5



FOUNDATION BUCKET

Application

Ideally suited for demolition work, for example for levering foundations, moving larger parts and loosening broken foundation parts; also ideal for pulling foundations and for breaking through ceilings.

Features

- Protruding blade with completely curved side cutting edge
- Generously dimensioned double tips combined with trapezoidal blades
- Reinforcement sickle
- Reinforced bucket interface
- Standard reinforcement stage with blade cutting edge and blade-/base-sided interior lining
- Special reinforcement stage in the engagement area (chocky bars)
- With CWP tooth system as standard



Cutting width in mm	Capacity ISO/L	Teeth
Class 29 (29 - 40 t)		
1500	1560	4



EXCAVATION BUCKET

Application

Due to the compact shape and the very small digging radius, maximum tear-out forces are achieved for the excavation and lifting during foundation dismantling. Moreover, the ideal partner for moving massive pieces of rock.

Features

Extremely oversized plate thickness and tooth system design in relation to the bucket dimension

Tooth holders at the corners angled outwards by 15°

Robust, generously dimensioned noses for moving

Special reinforcement stage in the engagement area (chocky bars)

With CWP tooth system as standard



Cutting width in mm	Capacity ISO/L	Teeth
Class 23 (23 - 29 t)		
700	270	3
Class 29 (29 - 40 t)		
750	352	3



rädlinger

DITCH CLEANING BUCKETS

Reliable partner in ditch and trough construction

The cutting width of ditch cleaning buckets is very large in relation to their overall dimensions. Together with their straight blade, they are ideal for shaping and modelling terrain with the excavator - for example, for making embankments and shoulders or for levelling surfaces.

In swivelling designs with a cylinder or tilt motor, or in combination with the Rädlinger Tilt 90, it is even possible to create complex terrain forms.

SERIES FEATURES



Example: Ditch cleaning bucket with cylinder

OUR DITCH CLEANING BUCKETS

Your excavator is only as good as its bucket!

MODELLING AND SHAPING

As their name suggests, ditch cleaning buckets are designed for ditch and trough construction. Ditch cleaning buckets in swivelling versions with cylinders or tilt motors or in combination with our Rädlinger Tilt 90 unfold their full potential, making even the creation of complex terrain shapes a breeze.



Ditch Cleaning Bucket (page 82)

The classic ditch cleaning bucket, optimised thanks to decades of experience.

Ditch Cleaning Bucket with Cylinder (page 86)

The classic ditch cleaning bucket in the swivelling version with cylinder.



Ditch Cleaning Bucket with Tilt Motor (page 92)

Low-maintenance and robust thanks to the tilt motor, with all the advantages of a swivelling bucket.

ADDITIONAL FLEXIBILITY

Additional flexibility is provided by our Rädlinger Tilt 90 or our Rädlinger tilt motor in combination with a quick coupler.



Tilt motor 2x45° (page 22)

A swivelling angle of 45° on both sides increases flexibility enormously.

Rädlinger Tilt 90 (page 18)

with mechanical quickcoupler

The Rädlinger Tilt 90 can be swivelled twice by 90° and increases the flexibility of your excavator enormously by combining it with a quick coupler.



Our experienced design department also designs customised products in close consultation with the customer if required.



Rädlinger Tilt 90 (page 18)

with hydraulic quickcoupler

Full flexibility with maximum safety: This is what the Rädlinger Tilt 90 with hydraulic quick coupler offers.



DITCH CLEANING BUCKET "RIGID" (UP TO 12 T)

Application

The Ditch Cleaning Bucket is used for picking up, transporting and pouring out soil and lightweight ground (light and medium-heavy use). In combination with the tilt motor Rädlinger Tilt 90, the bucket is particularly suited for ditch and trough construction, for the creation of embankments and shoulders, for grading and ditch cleaning as well as for the creation of complex ground forms.

Features

Equipped with mounting system Radlog as standard

No centre sickle (except cutting width 1800 mm), therefore also suitable for sticky material and optimal for dosing

From class 03, base in HB400

Side cutting edge made of blade steel HB500, 4° tapering per side

Drainage holes

Nose for bucket transport

Extra equipment

- » Embankment edge
- » Profile blade



Cutting width in mm	Capacity ISO/L	Weight in kg
Class 01 (up to 1.0 t)		
800	39	40

Class 02 (1.0 - 1.8 t)		
850	82	70
1000	97	80
1200	117	91

Class 03 (1.6 - 2.6 t)		
1000	97	93
1200	117	107
1400	138	120

Class 04 (2.6 - 3.5 t)		
1200	157	122
1400	185	138

Class 05 (3.5 - 5.0 t)		
1200	184	142
1400	216	160

Cutting width in mm	Capacity ISO/L	Weight in kg
Class 06 (4.8 - 6.0 t)		
1400	233	167
1600	267	187

from class 07: cutting width 1800 mm with sickle

Class 07 (6.0 - 8.0 t)		
1500	276	199
1600	295	210
1800	334	222

Class 08 (8.0 - 10 t)		
1600	338	265
1800	382	292

Class 09 (10 - 12 t)		
1600	379	320
1800	429	353



DITCH CLEANING BUCKET "RIGID" (11 TO 29 T)

Application

The Ditch cleaning bucket is used for picking up, transporting and pouring out soil and lightweight ground (light and medium-heavy use). In combination with the Rädlinger tilt motor versions, the bucket is particularly suited for ditch and trough construction, for the creation of embankments and shoulders, for grading and ditch cleaning and for the creation of complex ground forms.

Features

Base in HB400

Drainage holes

Embankment edge

Nose for bucket transport

Extra equipment

» Profile blades



Cutting width in mm	Capacity ISO/L	Weight in kg
Class 11 (11 - 15 t)		
1800	440	479
2000	495	522

Class 15 (15 - 19 t)		
1800	600	502
2000	650	546

Class 19 (19 - 23 t)		
2000	900	754
2200	1000	812

Class 23 (23 - 29 t)		
2000	1100	1101
2200	1260	1185
2400	1430	1269
2600	1600	1352



DITCH CLEANING BUCKET WITH CYLINDER (UP TO 6.0 T)

Application

The Ditch cleaning bucket with cylinder is used for picking up, transporting and pouring out soil and lightweight ground (light and medium-heavy use). The bucket is particularly suited for ditch and trough construction, for the creation of embankments and shoulders, for grading and ditch cleaning and for the creation of complex ground forms.

Features

No centre sickle, therefore also suitable for sticky material and optimal for dosing

Tilt movement $2 \times 45^\circ$

Protruding base to the side

2° tapering per side

Drainage holes

Extra equipment

- » Embankment edge
- » Optional protected load retaining valve integrated into the cylinder



Cutting width in mm	Capacity ISO/L	Weight in kg
Class 01 (up to 1.0 t)		
800	43	50

Class 02 (1.0 - 1.8 t)		
850	81	112
1000	96	128
1200	115	141

Class 03 (1.6 - 2.6 t)		
1000	100	132
1200	122	147
1400	143	164

Cutting width in mm	Capacity ISO/L	Weight in kg
Class 04 (2.6 - 3.5 t)		
1200	154	153
1400	180	170

Class 05 (3.5 - 5.0 t)		
1200	184	179
1400	216	200

Class 06 (4.8 - 6.0 t)		
1200	197	180
1400	230	201
1600	265	222



DITCH CLEANING BUCKET WITH CYLINDER (6.0 TO 12 T)

Application

The Ditch cleaning bucket with cylinder is used for picking up, transporting and pouring out soil and lightweight ground (light and medium-heavy use). The bucket is exceptionally suited for ditch and trough construction, for the creation of embankments and shoulders, for grading and ditch cleaning and for the creation of complex ground forms.

Features

No centre sickle (except cutting width 1800 mm), therefore also suitable for sticky material and optimal for dosing

Tilt movement $2 \times 45^\circ$ through a generously dimensioned hydraulic cylinder

Side-protruding base in HB400

2° tapering per side

Drainage holes

Extra equipment

- » Embankment edge
- » Profile blade
- » Optional protected load retaining valve integrated into the cylinder



Cutting width in mm	Capacity ISO/L	Weight in kg
Class 07 (6.0 - 8.0 t)		
1600	298	345
1800	342	381

Class 08 (8.0 - 10 t)		
1600	339	356
1800	383	394

Class 09 (10 - 12 t)		
1600	380	361
1800	429	400



DITCH CLEANING BUCKET WITH CYLINDER (11 TO 40 T)

Application

The Ditch cleaning bucket with cylinder is used for picking up, transporting and pouring out soil and lightweight ground (light and medium-heavy use). The bucket is exceptionally suited for ditch and trough construction, for the creation of embankments and shoulders, for grading and ditch cleaning and for the creation of complex ground forms.

Features

Embankment edge

Piston rod protection

Tilt movement $2 \times 45^\circ$ through two generously dimensioned hydraulic cylinders

Side-protruding base in HB400

2° tapering per side

Drainage holes

Centre sickle only necessary for oversizes or particularly large cutting widths

Additional wear material on the main blade

GPS sensor box can be retrofitted

Design allows the attachment to stand when not attached

Extra equipment

- » GPS mount
- » Profile blade
- » Optional protected load retaining valve



Cutting width in mm	Capacity ISO/L	Weight in kg
Class 11 (11 - 15 t)		
1800	440	575
2000	495	605

Class 15 (15 - 19 t)		
1800	600	633
2000	650	662

Class 19 (19 - 23 t)		
2000	900	934
2200	1000	969

Class 23 (23 - 29 t)		
2200	1260	1560
2400	1430	1620

Class 29 (29 - 40 t)		
2200	1515	1761
2400	1700	1833
2600	1885	1895
2800	2070	1958



DITCH CLEANING BUCKET WITH TILT MOTOR (11 TO 40 T)

Application

This Ditch cleaning bucket is used for picking up, transporting and pouring out soil and lightweight ground (light and medium-heavy use). The bucket is exceptionally suited for ditch and trough construction, for the creation of embankments and shoulders, for grading and ditch cleaning and for the creation of complex ground forms.

Features

Robust and low-maintenance tilt motor

Embankment edge

Hydraulic hoses are directly fed to the tilt motor to rule out damage

Bolts, cylinder and cylinder covering not needed

Screw-retained suspension for changing for various carrier devices

Integrated pressure relief valve prevents overload of the tilt motor

Drainage holes

Protruding base to the side in HB400

Tilt movement $2 \times 50^\circ$ (Availability of the revised variant depends on the class)

Centre sickle only necessary for oversizes or particularly large cutting widths

Additional wear material on the main blade

GPS sensor box can be retrofitted

Design allows the attachment to stand when not attached



Cutting width in mm	Capacity ISO/L	Weight in kg
Tilt Motor Class I (11 - 15 t)		
1800	440	626
2000	495	658
2200	550	690
2400	605	722

Tilt Motor Class II (15 - 19 t)		
1800	600	833
2000	650	868

Tilt Motor Class II S (19 - 23 t)		
1800	800	961
2000	900	1002
2200	1000	1043

Tilt Motor Class III L (23 - 26 t)		
2000	1000	1263
2200	1125	1315
2400	1250	1366
2600	1375	1418

Cutting width in mm	Capacity ISO/L	Weight in kg
Tilt Motor Class III (23 - 29 t)		
2000	1100	1515
2200	1260	1572
2400	1430	1632
2600	1600	1691

Tilt Motor Class IV (29 - 40 t)		
2000	1330	2090
2200	1515	2160
2400	1700	2245
2600	1885	2325
2800	2070	2395

Tilt Motor Class V (up to 50 t) on request

Extra equipment

- » Special seal to protect the standard motor seal when used under water or in fine sandy soils available on request for tilt motor classes II S and III L
- » Bucket body in HB400
- » Load retaining valve
- » Reversible screw-on blade



rädlinger

SPECIAL ATTACH- MENTS

The first choice for special missions

Where construction sites and measures require very special work and buckets or shovels reach their limits, our special attachments are the ideal solution.

The following special products have been perfectly tailored to their respective applications and designed and optimised in close cooperation with our customers.

Trapezoid Bucket



Two-Shell Universal Grabs



Excavator Spade



Push Broom/



Forklift Broom

**Work faster, more precisely
and effectively:**

Choose the perfect special attachment from our product range
for your application!

Auger



Hydraulic Breaker



Cone Splitter





TRAPEZOID BUCKET

Application

The bucket is suitable for the regeneration of shoulders as well as for forest path maintenance or cleaning of overgrown and silted trenches on roads and forest paths. With the Trapezoid bucket, a far higher output per hour and thus higher revenues can be achieved than with conventional ditch cleaning buckets.

Features

45° rotatable through a cylinder

Tilt movement $2 \times 45^\circ$ through tilt motor

Separately adjustable wings to avoid obstacles for unlimited range of operation

Embankment angle of 30° to 55° separately adjustable on each side

Base width approx. 400 mm

Available for excavators of 10 - 16 t and 16 - 20 t operating weight

Extra equipment

- » Wear and tear packages for forestry road construction available (Forest, Forest-Plus)
- » Rotary movement possible by means of cylinder or tilt rotator
- » Also available as rigid version (Individual profiles and embankment angles available on request)





CLEARING RAKE

Application

This special attachment can be used to clear bushes, shrubs and undergrowth. It is also ideal for collecting tree prunings, loosening the soil and for sorting work in recycling.

Features

Equipped with mounting system Radlog as standard

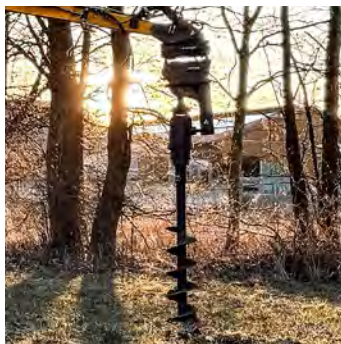
Tines in HB400

Nose for bucket transport



Class	Cutting width in mm	Tines
02	600	5
03/04	800	5
05/06	1000	5
07	1000	5
08/09	1000	5

NEW!



AUGER

Application

The auger is ideal for creating holes for fence construction, tree planting, screw anchors, seepage shafts, noise barriers, street signs and much more. This makes it a powerful tool for landscaping and forestry, as well as for the municipal and construction industries.

Features

Planetary gear

Hydraulic motor

Fixed shaft

Pendulum adapter with support

Extra equipment

- » Auger extension
- » Replacement drill



Auger dimension	Max. torque in Nm	Max. working pressure in bar	Weight in kg	Oil requirement in l/min	Auger drill diameter in mm
REB02 (1,0 - 3,5 t)					
2" Hex (6-Kant)	2.840	70 - 240	48	27 - 65	100 - 400
REB05 (3,0 - 5,0 t)					
75mm (4-Kant)	3.614	70 - 240	108	40 - 75	150 - 400
REB06 (4,5 - 8,0 t)					
75 mm (4-Kant)	5.050	80 - 240	108	40 - 75	150 - 600
REB08 (7,0 - 10,0 t)					
75 mm (4-Kant)	6.820	80 - 260	110	50 - 115	150 - 1.000
REB09 (10,0 - 17,0 t)					
75 mm (4-Kant)	12.610	80 - 240	162	70 - 150	150 - 1.000

NEW!



HYDRAULIC BREAKER

Application

The hydraulic breaker is suitable for crushing and breaking hard materials. In demolition, it can be used to demolish concrete walls, foundations, bridges and more. In civil engineering, it breaks up hard soils and rocky ground, and in road construction, it crushes asphalt. It can also be used in mining to crush rock.

Features

With chisel

With grease cartridge

Housing base plate in HB400

Adjustable blow rate (except RHH02)

Extra equipment

- » 90° cut chisel
- » 90° cut asphalt wide chisel
- » Parallel cut asphalt wide chisel
- » Housing base plate made of HB500
- » Special equipment for underwater use (for X-TREME RHH11 and RHH15 hydraulic breakers)



Hydraulic Breaker



Hydraulic Breaker X-TREME

Weight in kg	Mounting System	Oil flow rate in l/min	Working pressure in bar	Max. hydraulic input power in kW	Blow rate in blow/ min	Impact energy in J	Back pres- sure in bar	Length with tool in mm	Tool dia- meter in mm
RHH02 (1,2 - 2,4 t)									
100	SW01/ SW03	23 - 32	100 - 140	7	800 - 1.200	150 - 230	15	1.112	48
RHH04 (2,4 - 3,2 t)									
180	SW03	30 - 42	100 - 140	10	800 - 1.200	240 - 360	15	1.279	53,7
RHH05 (3,4 - 5,0 t)									
255	SW03	40 - 60	100 - 140	14	650 - 1.000	450 - 590	15	1.496	67,5
RHH06 (4,0 - 5,5 t)									
275	SW03	40 - 60	100 - 140	14	650 - 1.000	450 - 590	15	1.543	71,5
RHH07 (5,5 - 7,0 t)									
350	SW03	50 - 75	100 - 140	18	700 - 1.000	625 - 830	15	1.569	77,5
RHH08 (8,0 - 9,0 t)									
425	SW08	60 - 80	100 - 140	19	600 - 950	680 - 900	15	1.753	81,5
RHH09 (9,0 - 10,0 t)									
568	SW08	80 - 100	100 - 140	23	600 - 850	680 - 1.060	15	1.887	81,5
Hydraulic Breaker X-TREME RHH11 (10,0 - 14,0 t)									
700	SW10	80 - 100	150	25	600 - 900	2000	25	1.900	95
Hydraulic Breaker X-TREME RHH15 (15,0 - 19,0 t)									
970	SW10	90 - 120	160	32	700 - 900	2400	25	2050	105

NEW!



CONE SPLITTER

Application

The cone splitter splits quickly and reliably. Tree trunks or rootstocks can be chopped up and used as fire-wood or for chaff-cutting systems.

Features

Planetary gear

Fixed shaft

75 mm 4-sided shaft

Extra equipment

- » Weed Brush
- » Cultivator
- » Rootstock cutter

Weight in kg	Max. torque in Nm	Cone diameter in mm	Oil requirement in l/min	Max. working pressure in bar
RKS02 (1,0 - 3,5 t)				
48	2.840	180/250	27 - 65	70 - 240
RKS05 (3,0 - 5,0 t)				
108	3.614	250/315	40 - 75	70 - 240
RKS06 (4,5 - 8,0 t)				
108	5.050	250/315	40 - 75	80 - 240
RKS08 (7,0 - 10,0 t)				
110	6.820	250/315	50 - 115	80 - 260
RKS09 (10,0 - 17,0 t)				
162	12.610	315	70 - 150	80 - 240



PUSH BROOM/FORKLIFT BROOM

Application

With the push broom/forklift broom, the excavator becomes a cleaning machine: Halls, car parks and streets can be cleaned quickly and easily. It also makes it easy to straighten gravel, sand or earth surfaces.

Features

Broom holder with plastic or wire insert

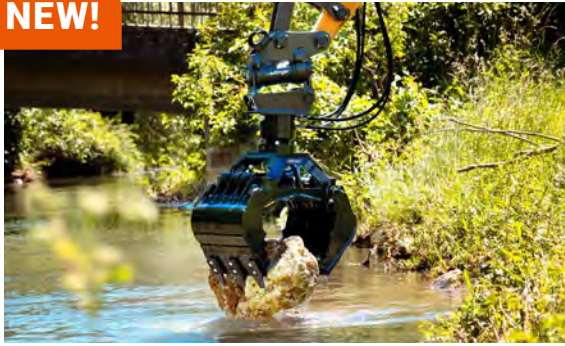
Suitable for forks and quick-coupling system

Side guide rails

Bristle height 200 mm

Width in mm	Weight in kg	Number of rows	Mounting systems
RSB02			
1500	55	2	SW01, SW03
RSB06			
1500	75	3	SW03, SW08
2000	145	3	SW08

NEW!



TWO-SHELL UNIVERSAL GRABS

Application

The Two-Shell Universal Grabs make it possible to grab and precisely position a wide variety of components and much more with the excavator. For example, landscaping companies can erect natural stone walls, dig in or out pipes or sort materials.

Features

- Open design
- Load retaining valve
- Bolt-on tooth

Extra equipment

- » Rotator
- » Side plates for closed shells
- » Welded teeth (for RUG02 to RUG10, RUG15 and RUG20 have welded teeth as standard)
- » Reversible bolt-on edge
- » Surcharge for tubing incl. 6/2-way valve incl. solenoid plug without cable
- » Hose guide



Cutting width in mm	Capacity ISO/ [l]	Teeth	Closing force in kN	Weight without/ with rotator in kg	max. operating pressure in bar	Opening width in mm	min./max. height in mm	min./max. flow rate in l/min
RUG02 (1,0 - 2,5 t)								
300	27	3	15	59/79	320	1.026	565 - 656	10 - 50
RUG03 (2,0 - 3,5 t)								
300	27	3	15	59/86	320	1.026	611 - 702	10 - 50
RUG05 (4,0 - 6,0 t)								
450	86	5	27	194/243	320	1.322	791 - 851	15 - 60
RUG06 (6,0 - 7,0 t)								
450	86	5	27	194/255	320	1.322	791 - 851	6 - 70
RUG08 (6,0 - 9,0 t)								
500	121	5	27	322/399	320	1.563	991,1 - 1.083	15 - 80
RUG10 (9,0 - 12,0 t)								
500	121	5	27	322/414	320	1.563	1.048 - 1.095	15 - 80
RUG15 (13,0 - 20,0 t)								
650	295	5	74	685/765	350	2.087	867 - 1.140	15 - 100
RUG20 (20,0 - 23,0 t)								
650	295	5	74	727/808	350	2.087	867 - 1.149	15 - 100



GRADING BUCKET

Application

A perfect combination with tilt rotators:

When this bucket turns, it can cleverly avoid obstacles thanks to its chamfered corners. Clean leveling and backfilling therefore becomes child's play.

Features

Equipped with mounting system Radlog as standard

Grading Bucket without teeth

Base in HB400

Up to Class 09 with nose for bucket transport

Extra equipment

- » Transverse wear strips in HB500
- » Bucket body in HB400
- » Tooth system
- » Reversible screw-on blade

Cutting width in mm	Capacity ISO/L	Weight in kg
Class 02 (1.0 - 1.8 t)		
700	51	52
800	58	59

Class 03 (1.6 - 2.6 t)		
800	81	75
900	94	84
1000	107	93

Class 04 (2.6 - 3.5 t)		
900	122	95
1000	138	105
1100	154	116
1200	172	127

Class 05 (3.5 - 5.0 t)		
1000	175	121
1100	195	133
1200	215	145
1300	235	157

Class 06 (4.8 - 6.0 t)		
1000	205	137
1100	230	150
1200	255	163
1300	290	176

Class 07 (6.0 - 8.0 t)		
1000	245	176
1100	275	194
1200	305	212
1300	335	230

Class 08 (8.0 - 10 t)		
1200	355	233
1300	395	252
1400	435	271
1500	475	290



Cutting width in mm	Capacity ISO/L	Weight in kg
Class 09 (10 - 12 t)		
1200	400	270
1300	445	293
1400	490	316
1500	535	339

Class 11 (11 - 15 t)		
1400	570	405
1500	620	434
1600	670	463

Class 15 (15 - 19 t)		
1500	720	515
1600	780	549
1700	840	583

Class 19 (19 - 23 t)		
1500	830	610
1600	900	651
1700	970	692
1800	1040	733

Class 23 (23 - 29 t)		
1800	1200	912
1900	1290	963
2000	1380	1014

Class 29 (29 - 40 t)		
1800	1400	1210
2000	1600	1345
2200	1800	1480



EXCAVATOR SPADE

Application

Digging or excavating, vertical or horizontal work - the Excavator spade can be used to carry out shafting, digging and uncovering during material excavation.

Damages, for example to pipes and cables, can be reduced and the vertical digging depth can be increased.

Features

Combines conventional and Mounting system Radlog; enables horizontal and vertical operation

Open design for material movement

Standardised sizes:

SW 01 to 08

Oil Quick OQ40 to OQ70/55

Extra equipment

- » Exchangeable blade, laterally moveable for more effective digging under pipes and cables
- » Reversible screw-on blade
- » Rädlinger Tilt 90 for expansion of the application possibilities



Coupling system	Wall thickness class	Blade in mm	Height in mm	Cutting width in mm	Weight in kg
SW 01 Radlog	01 - 02	16 × 150, HB500	900	320	55
SW 03 Radlog	03 - 06	20 × 200, HB500	1000	320	90
Oil Quick OQ40	03 - 06	20 × 200, HB500	1000	320	93
Oil Quick OQ45-5	03 - 06	20 × 200, HB500	1000	350	113
Oil Quick OQ45-5	07 - 09	25 × 200, HB500	1500	400	227
Oil Quick OQ 60	07 - 09	25 × 200, HB500	1500	400	258
SW 08 Radlog	07 - 09	25 × 200, HB500	1500	400	205
Oil Quick OQ 60	11 - 15	30 × 300, HB500	1800	500	383
Oil Quick OQ 65	15 - 19	30 × 300, HB500	1800	500	453
Oil Quick OQ 70/55	19 - 23	30 × 300, HB500	2000	650	624



RIPPER

Application

The Ripper is used for breaking up the hardest types of rock (e.g. limestone, clay slate, nagelfluh layers, slag, basalt and granite).

Features

Concentrates the highest possible force on the tooth tip

Can be combined with standard tooth systems

Very robust construction design

Up to Class 09 with nose for bucket transport



Ripper class	Operating weight in t	Sword strength in mm	Weight in kg	Tooth radius in mm
02	1.0 - 1.8	20	43	500
03	1.6 - 2.6	20	51	500
04	2.6 - 3.5	20	51	500
05	3.5 - 5.0	25	73	600
06	4.8 - 6.0	25	73	600
07	6.0 - 8.0	30	73	600
08	8.0 - 10	35	196	800
09	10 - 12	35	196	900
11	11 - 15	40	295	900
15	15 - 19	50	265	1000
19	19 - 23	50	560	1200
23	23 - 29	50	705	1200
29	29 - 40	60	940	1400



PALLET FORK FOR EXCAVATORS

Application

The pallet fork is used for lifting and transporting pallets and all types of goods that can be driven under. It is available in a version for excavators as well as for wheel loaders.

Features

Individually adjustable forks

Tines with safety lock

Production with direct or quick coupler attachment

For all common pallets due to adjustable tines

Extra equipment

» Custom-built designs available

Class	Coupling system	Fork carrier width in mm	Fork carrier	Tine dimensions in mm	Load capacity in kg at LSP 500
06	SW 03 Radlog	1200	ISO2	100 × 40 × 1200	2500
07 / 08 / 09	SW 08 Radlog	1250	ISO2	100 × 40 × 1200	2500
07 / 08 / 09	Oil Quick OQ45	1200	ISO2	100 × 40 × 1200	2000
11 / 15	SW 10 Radlog	1200	ISO3	125 × 45 × 1200	2500
11 / 15 / 19	Oil Quick OQ65	1200	ISO3	125 × 45 × 1200	4000
11 / 15 / 19	Oil Quick OQ70/55	1200	ISO3	125 × 45 × 1200	4000

When used with tilt rotators, grabs etc., this must be specified with the order.

Please also check your machine documentation whether the use with your excavator is approved.

WHEEL LOADER WEIGHT CLASSES

Class	Operating weight (t)
I	- 1.8
II	1.8 - 3
III	3 - 4
IV	4 - 6
V	6 - 8
VI	8 - 10
VII	10 - 12
VIII	12 - 14
IX	14 - 17
X	17 - 23
XI	23 - 30
XII	30 - 38
XIII	38 - 60
XIV	60 - 100
XV	100 - 180
XVI	180 - 250



Our attachments are divided into classes to help you find the right product for your construction machine. Simply contact our sales team for a no-obligation, detailed consultation and recommendation.



rädlinger

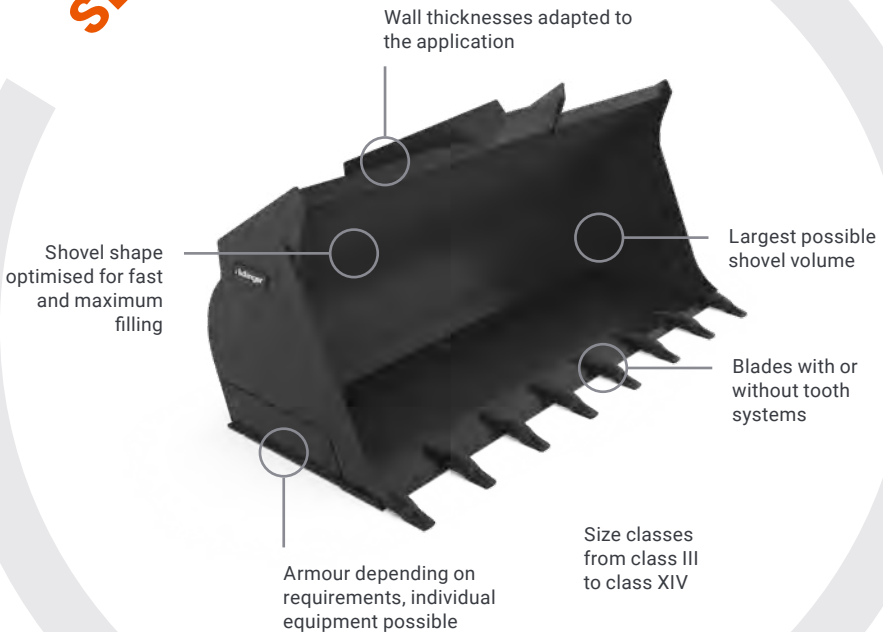
WHEEL LOADER SHOVELS

Efficient handling and loading

Only with an optimally adapted loading shovel can you attain the full performance potential of your wheel loader. What matters is the right balance between the wheel loader, the shovel and the nature of the material being worked on.

In our programme, you will find the right tools for wheel loaders of up to 100 tonnes of machine weight for light to heavy duty use.

SERIES FEATURES



Example: Premium loader shovel

THE RIGHT SHOVEL

Your wheel loader is only as good as its shovel!

SHOVELS FOR STANDARD USE

Wheel loaders are used in a wide variety of applications - and with varying degrees of intensity. Whether you use your wheel loader all the time or only occasionally: We can offer you a shovel that maximises cost-efficiency.

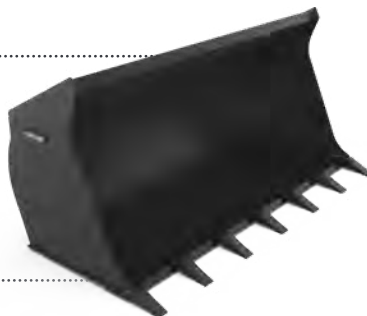


Agriculture Light Material Shovel (page 122)

The Yard Shovel is designed for use in agricultural and building yards. It combines Rädlinger's design experience with a particularly attractive price.

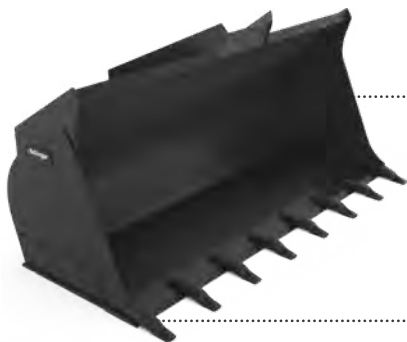
Basic Loading Shovel (page 124)

The Basic Loader Shovel is ideal for regular use. With its optimised cost-benefit factor, it is the choice for standard applications in the commercial sector.



Premium Loading Shovel (page 126)

No compromises: an ideal and durable all-rounder for a wide range of jobs. With extra wear protection and made of high-quality materials, it is designed for continuous use.



We have the right loading shovel for every application: Not only do we have optimally designed loading shovels for special applications, we also offer different products for standard applications in order to provide our customers with the right product.

SHOVELS FOR SPECIAL REQUIREMENTS

Special requirements call for special loading shovels: We have our Light Material Shovel, with its maximum volume for fast handling, and the Rock Shovel, designed for the toughest applications.



Light Material Shovel (page 132)

Optimised for loading lightweight bulk goods.

Rock Shovel (page 131)

With wear protection for mining applications.



Our experienced design department also designs customised products in close consultation with the customer, if required.



4 in 1 Shovel (page 128)

The Rädlinger 4 in 1 Shovel combines four functions in a single device.

Pallet Fork for wheel loaders (page 134)

Loading made easy with the Pallet Fork for your wheel loader.





AGRICULTURE LIGHT MATERIAL SHOVEL

Application

The Yard Shovel is designed for the use in agricultural and building yards. It combines Rädlinger's design experience with a particularly attractive price. The Yard Shovel is suitable for light-duty applications.

Features

Shovel shape designed for fast and maximum filling

Available for loaders from 3.5 to 7.2 tonnes operating weight - other sizes available on request

Equipped with three longitudinal wear strips and one transverse wear strip

Extra equipment

- » Reversible bolt-on edge
- » Esti E3 bolt-on teeth
- » Loading hook
- » Tooth protection



Cutting width in mm	Capacity ISO/L	Weight in kg
1400	610	238
1500	660	249
1600	710	253
1700	760	274
1800	810	285
1900	860	298
2000	910	309
2100	960	320
2200	1010	332
2300	1060	345



BASIC LOADING SHOVEL

Application

The Basic Loading Shovel is suitable for handling “medium” bulk materials (e.g. ballast, soil, gravel, crushed stone or sand). Other applications depend on the choice of equipment with a pull-off edge or a rising base at the rear of the shovel.

Features

Pull-off edge option: Load area always stays straight as the edge can be used as a levelling blade when reversing

Shovel shape designed for fast and maximum filling

Manufactured in all sizes and for all carriers, with direct or quick coupler attachment options

Equipped lengthwise with four wear strips and one transverse wear strip

Extra equipment

- » Reversible bolt-on edge
- » CAT-J tooth system



Cutting width in mm	Capacity ISO/L	Weight in kg
Class IV (4,0 - 5,0 t)		
1800	850	300
1900	900	311
2000	950	323
2100	1000	334
2200	1050	346

Class V (5,0 - 7,0 t)		
1900	1000	381
2000	1060	394
2100	1120	408
2200	1180	421
2300	1240	435

Class VI (7,0 - 9,0 t)		
2200	1360	508
2300	1420	530
2400	1500	551
2500	1560	573

Class VII (9,0 - 11 t)		
2400	1720	745
2500	1800	767
2600	1880	789
2700	1960	811

Cutting width in mm	Capacity ISO/L	Weight in kg
Class VIII (11 - 13 t)		
2500	2300	930
2600	2400	960
2700	2500	991
2800	2600	1021

Class IX (13 - 17 t)		
2700	2930	1243
2800	3040	1279
2900	3150	1315
2990	3260	1348

Class X (17 - 22 t)		
2800	3340	1514
2900	3470	1549
2990	3600	1580
3100	3730	1618
3200	3860	1653

Class XI (22 - 28 t)		
2990	4170	1959
3100	4320	2006
3200	4470	2050
3300	4620	2093
3400	4770	2136



PREMIUM LOADING SHOVEL

Application

The Premium Loading Shovel is suitable for handling “medium” bulk materials (e.g. ballast, soil, gravel, chunked stone or sand). Other applications depend on the choice of equipment with pull-off edge or a rising base at the rear of the shovel.

Features

Pull-off edge option: Load area always stays straight as the edge can be used as a levelling blade during reversing

Shovel shape designed for fast and maximum filling

Manufactured in all sizes and for all carriers, with direct or quick coupler attachment options

Equipped with six longitudinal wear strips and one transverse wear strip as well as side protection

Material deflector plate in lifting frame area

Extra equipment

- » Bucket body completely made of HB400
- » Tooth protection
- » CWP tooth system
- » CAT-J tooth system
- » Reversible bolt-on edge



Cutting width in mm	Capacity ISO/L	Weight in kg
Class IV (4.0 - 5.0 t)		
1800	850	314
1900	900	325
2000	950	337
2100	1000	349
2200	1050	360

Class V (5.0 - 7.0 t)		
1900	1000	404
2000	1060	416
2100	1120	428
2200	1180	440
2300	1240	454

Class VI (7.0 - 9.0 t)		
2200	1360	512
2300	1420	534
2400	1500	556
2500	1560	580

Class VII (9.0 - 11 t)		
2400	1720	760
2500	1800	792
2600	1880	824
2700	1960	856

Cutting width in mm	Capacity ISO/L	Weight in kg
Class VIII (11 - 13 t)		
2500	2300	928
2600	2400	966
2700	2500	1002
2800	2600	1040

Class IX (13 - 17 t)		
2700	2930	1246
2800	3040	1292
2900	3150	1338
2990	3260	1380

Class X (17 - 22 t)		
2800	3340	1564
2900	3470	1618
2990	3600	1670
3100	3730	1732
3200	3860	1788

Class XI (22 - 28 t)		
2990	4170	2038
3100	4320	2110
3200	4470	2182
3300	4620	2248
3400	4770	2320

4 IN 1 SHOVEL

Application

The Rädlinger 4 in 1 Shovel combines four functions in a single device: In addition to conventional loading and unloading - with the flap closed or open - the hinge function between the base and rear wall also enables precise dosing and material can be gripped with the flap at the same time.

Features

Blade in HB500

2 protected built-in cylinders

Doubling l/r in HB400

Back cutter (flap) in HB500

Replaceable cutting edge (back flap) in HB500

Bucket level indicator

Interlocking gripping edges on flap and back wall

Quick coupling mount

Special equipment

- » Tooth systems depending on class
- » Loading hook
- » Load retaining valve
- » Special mounting
- » Tooth protection
- » Reversible screw-on blade
- » Profile blade available starting at class 4



Cutting width in mm	Capacity ISO/L	Teeth	Weight in kg
Klasse I (- 1,8 t)			
1000	160	4	176
1200	200	5	191
1400	240	5	208
1500	260	5	219

Klasse II + III (1,8 - 4,0 t)			
1200	300	5	283
1400	350	5	306
1500	380	5	317
1600	400	5	328
1800	450	6	350

Klasse IV + V (4,0 - 8,0 t)			
1500	650	6	481
1600	700	6	500
1800	800	7	537
1900	850	7	555
1950	870	7	564
2000	900	7	574
2200	1000	7	610

NEW!



SIDE DUMPING SHOVEL

Application

The Rädlinger side dumping shovel enables precise material removal without having to move the entire machine. This helps when unloading material in difficult or narrow areas.

Features

Can be tilted 90° sideways

Tilt angle indicator

Quick coupling mount

Automatic hydraulic locking

Side wall material output in HB400

Extra equipment

- » Loading hook
- » Reversible screw-on blade



ROCK SHOVEL

Application

With its extremely robust construction design, the Rock Shovel can also be used under difficult conditions with particularly strong wear behaviour, such as found in the mining industry when handling or loading quarry and rock materials.

Features

Very generously dimensioned box

Shovel with trapezoidal blade

All cutting widths are fitted with 8 teeth

Spillguard with pipes or slots

With CWP tooth system as standard

Extra equipment

- » Bucket body completely in HB400
- » Side stone deflectors
- » Protection segments
- » Screw-on segments



Class in t	Cutting width in mm	Capacity ISO/L	Weight in kg
VIII (11 - 13)	ca. 2800	2300	1685 - 1860
IX (13 - 17)	ca. 3000	3000	2110 - 2350
X (17 - 22)	ca. 3200	3800	3000 - 3340
XI (22 - 28)	ca. 3600	4600	3590 - 3940
XII (28 - 45)	ca. 3800	6300	5300 - 5920



LIGHT MATERIAL SHOVEL

Application

This shovel is exceptionally suited for handling light bulk material. Areas of application: feed industry, composting plants, coal reclaiming, sawmills and snow transport. Other areas of application depend on choice of equipment with pull-off edge or upward increasing base at the rear of the shovel.

Features

Maximum shovel volume through design for light bulk material

Pull-off edge option: Load area always remains straight since the edge can be used as a grading blade during reverse driving

Shovel shape designed for fast and maximum filling

Manufactured in all sizes and for all carrier devices and with direct or quick coupler attachment possible

Equipped lengthwise with four wear strips and one transverse wear strip

Extra equipment

- » Deflector plate in the mast area
- » Bucket body completely in HB400
- » Reversible screw-on blade in HB500
- » Loading hook
- » Side protection
- » CWP tooth system



Class in t	Cutting width in mm	Capacity ISO/L	Weight in kg
IV (4.0 - 5.0)	2100	1080	490
V (5.0 - 7.0)	2200	1440	620
VI (7.0 - 9.0)	2400	2000	800
VII (9.0 - 11)	2600	2400	960
VIII (11 - 13)	2800	3000	1335
IX (13 - 17)	3000	4000	1975
X (17 - 22)	3200	4900	2270
XI (22 - 28)	3600	5760	3065
XII (28 - 45)	3800	10000	5210



PALLET FORK FOR WHEEL LOADERS

Appilcation

The Pallet Fork is used to lift and transport pallets and all types of goods under which the fork can be placed (pallet fork up to 16000 kg).

Features

Individually adjustable forks

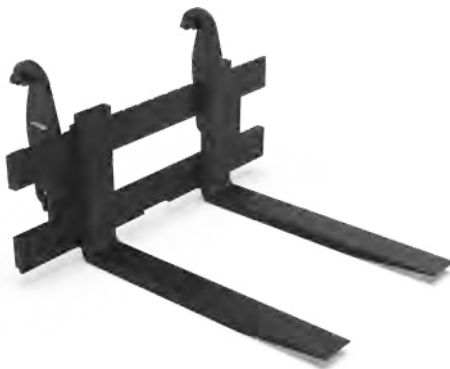
Tines with safety lock

Production with direct or quick coupler attachment

For all common pallets due to adjustable tines

Extra equipment

» Custom-built designs available



FEM class	Model	Load capacity in kg	Fork carrier width in mm	Tine dimensions in mm
Class I, II (bis 3,5 t)				
II	normal	2500	1400	120 × 40 × 1200
III	heavy	4000	1500	125 × 45 × 1200
Class III, IV, V (bis 7,0 t)				
III	normal	4000	1500	125 × 45 × 1200
III	heavy	5000	1500	150 × 50 × 1200
Class VI, VII (bis 11 t)				
III	normal	5000	1500	150 × 50 × 1200
IV	heavy	7000	1750	150 × 60 × 1200
IV	heavy	10000	1750	200 × 70 × 1500
Class VIII, IX (bis 17 t)				
IV	normal	7000	1750	150 × 60 × 1200
IV	normal	10000	1750	200 × 70 × 1500
V	heavy	10000	1750	200 × 80 × 1500
Class X (bis 22 t)				
V	normal	10000	1750	200 × 80 × 1500
on request	heavy	16000		

CUSTOM ATTACHEMENTS

Many work processes can be made more efficient with customised designs and a good idea. With its experienced design department, Rädlinger Maschinen- und Stahlbau has the planning know-how to develop special attachments. The steel construction department then turns even the largest and most complex plans into reality with its generously equipped machinery.



Examples of previously created custom attachments:

- » Ball forceps
- » Face shovel
- » Dragline bucket





CUSTOM COMPONENTS FOR CONSTRUCTION MACHINES

Do you need special solutions directly for your construction machine? Our steel construction experts can even handle the most unusual requirements.

Examples for custom components:

- » Excavator arm retrofit
- » Excavator arm extension
- » Dozer blade
- » Raised side panel





STEEL CONSTRUCTION

In the field of steel construction, Rädlinger Stahlbau GmbH offers customised solutions according to customer requirements for all types of steelwork.

Whether you want to implement small or large steelwork projects: We are the ideal partner. We dare to take on even the most unusual and difficult projects! With our experienced team and modern machinery, we ensure fast and flexible order processing while maintaining excellent quality.

What we offer in the field of steel construction

- » Project development and planning
- » Development
- » Construction
- » Production
- » Delivery
- » Installation



CONTRACT MANUFACTURING

Use our manufacturing capabilities and capacities for your success!

Rädlinger Maschinenbau GmbH is not only one of the largest suppliers of construction machinery in the German-speaking area and an expert in steel construction and bridge building. We also offer our production capacity as a contract manufacturer for your projects.

You too can benefit from our modern machinery and the decades of metalworking experience of our staff.

Our manufacturing capabilities

- » Turning
- » Milling
- » Drilling
- » Sawing, cutting and deburring
- » Round bending and folding
- » Ultra deep-freezing
- » Head stud welding
- » Welding



AFTER SALES

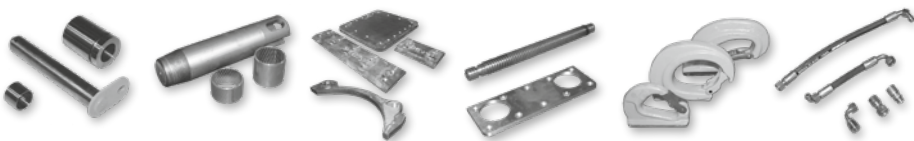
WEAR AND SPARE PARTS

Downtime halts project progress and costs money. To provide customers and our own production with relevant components for repairs and regeneration, Rädlinger has a large store of wear and spare parts.



We have various spare and wear parts in stock:

- » Steel blades
- » Reversible blades
- » Profile blades
- » Wear protection
- » Wear strips
- » Tooth systems e. g.: Tooth kits, spare teeth, adapters
- » Loading hooks
- » Bolts and connectors
- » Hydraulic cylinders
- » Bolts and protections
- » Valves
- » Tilt motors
- » Seals





AFTER SALES

SERVICE/WARRANTY

Thanks to qualified staff, high-quality materials and a process-oriented quality control, we can grant our customers products of convincing quality.

In warranty cases, our service department will be glad to help you.



During the warranty period, our customers appreciate straightforward and fast support:

- » On-site inspection upon agreement
- » Repair works with original spare parts
- » Hydraulic measurements incl. recording (pressure and volumetric flow rate)
- » Inspection, consulting and support for special solutions
- » Company service fleet
- » Comprehensive, Germany-wide service network



AFTER SALES

REGENERATION AND REPAIR

Long and intensive work performances leave traces on your buckets and shovels. Proper and timely maintenance is therefore necessary both for lasting use of the construction equipment and also for optimal machinery performance and economical fuel consumption.

High quality & fast

Rädlinger Maschinenbau has a large stock of various wear and spare parts made of high-quality materials from well-known manufacturers, which are used for regeneration. Together with the modern machine pool, repairs or conversions can be carried out without long waiting times. Rädlinger also provides the customers with blades, bucket bases and various sheet metal parts for their own regeneration.

Individual & tested

Details about the equipment's area of application and the options for technical improvements are coordinated with the customers for optimum regeneration of the attachment. One option contains various protective armour systems that are fitted to the entire attachment and effectively protect all areas that are subject to wear. These have been best proven in use and have been further developed for years.



We professionally repair your worn and damaged attachments of all types, for example:

- » Backhoe buckets and face shovels
- » Ditch cleaning bucket
- » General purpose buckets
- » Arms and booms
- » Tilt motors
- » Quick couplers

After a detailed damage analysis, our sales representatives will coordinate the technical options with you and will consult you competently and inclusively of a cost estimate for optimal and quick repair works.

SOLUTIONS BY COMBI WEAR PARTS

Strong partners: Rädlinger Maschinen- und Stahlbau GmbH is a distributor of Combi Wear Parts AB. The Swedish manufacturer of extremely durable wear parts supplies exactly the teeth and armour that make our products fit for the toughest applications - made of high-strength steel. We stock not only the kits for the basic equipment, but also individual spare parts.

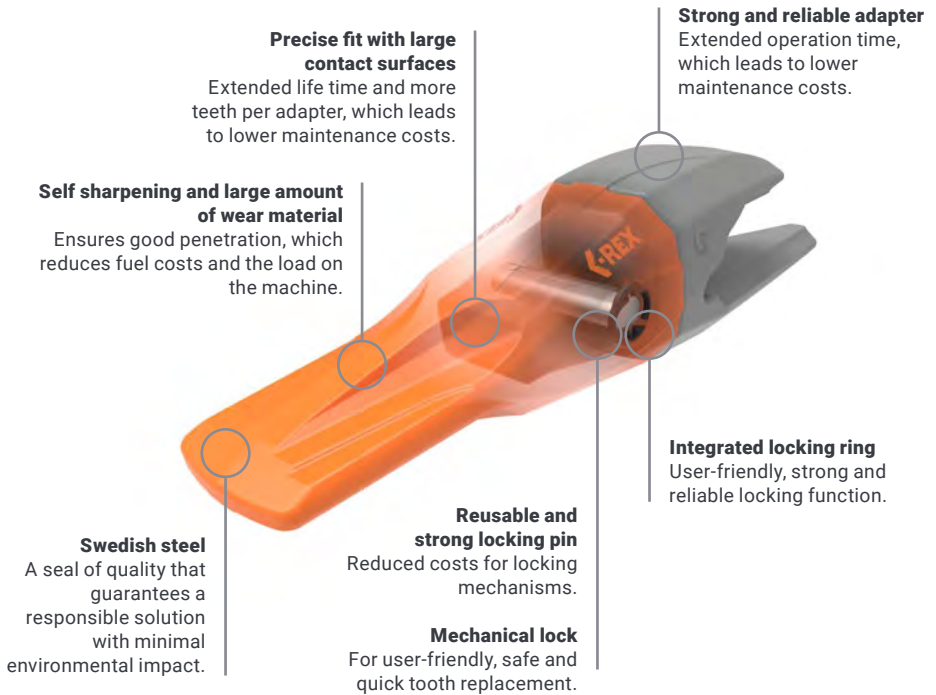
C-REX BY COMBI WEAR PARTS

Reliable, functional and sustainable teeth for your spoons and shovels

To increase operation time, the length of the tooth and proportion of wear material have been maximized. The adapters have also been reinforced to significantly lower operating costs for users.

C-REX has a unique mechanical lock that makes mounting and dismounting of the teeth much easier. The lock is hammerless and consists of just one loose part, a locking pin that can be re-used throughout the lifetime of the system.

All teeth are supplied with an integrated locking ring, which ensures reliable function. Using a special designed locking tool it is easy to lock and unlock the tooth, simply by moving the locking ring a quarter turn.





RÄDLINGER AT COREUM

Rädlinger can be experienced 365 days a year at the Coreum in Stockstadt near Frankfurt. Our products can be tested there in various, realistic demo construction sites - with expert advice from our sales team.



COREUM365.DE

experience and
test rädlinger live.

365





RÄDLINGER
MASCHINENBAU GMBH
Kammerdorfer Straße 16 | 93413 Cham
Tel.: +49 9971 8088-0
Fax.: +49 9971 8088-9999

info@raedlinger.de
www.raedlinger.de

Managing Director:
Werner Rädlinger

rädlinger
WERNER RÄDLINGER GROUP

Version: 03/2025
Subject to technical modifications and product improvements.
All information about dimensions and weight are approximate and not guaranteed.