



rädlinger

PRODUCT RANGE
Construction Machinery Equipment

rädlinger



CONTENT

- 4 **Company Profile**
- 6 **Construction Machinery Equipment**
- 8 **Quick Couplers/Tilt Motors/Equipment**
 - 10 Rädlinger Quick Coupler MS
 - 12 Rädlinger Quick Coupler HS
 - 14 Rädlinger Tilt 90
 - 16 Rädlinger Tilt Motor
 - 18 Tilt Motor with Quick Coupling System
 - 19 Mounting Kit for Hydraulic Quick Couplers
 - 20 Hosing Packages
 - 21 Hammer Mounting Plates/Adapter Frames/Adapter Plates
- 22 **Weight Classes - Excavator**
- 23 **Weight Classes - Wheel Loader**
- 24 **Backhoe Buckets**
 - 26 Standard Backhoe Bucket (up to 6.0 t)
 - 28 Standard Backhoe Bucket (6.0 to 12 t)
 - 30 Standard Backhoe Bucket (11 to 40 t)
 - 32 Standard Backhoe Bucket without Teeth (6.0 t)
 - 34 Standard Backhoe Bucket without Teeth (6.0 to 12 t)
 - 36 Standard Backhoe Bucket without Teeth (11 to 40 t)
 - 38 Backhoe Bucket X-TREME (11 to 40 t)
 - 40 Cable Bucket
 - 42 Sewer Bucket
 - 44 Backhoe Bucket with Cylinder (11 to 40 t)
 - 46 Backhoe Bucket with Tilt Motor
 - 48 Skeleton Bucket
- 50 **Mining Buckets**
 - 52 Backhoe Bucket Individual/Heavy
 - 54 Rock Bucket
 - 56 Stone Placing Bucket
 - 57 Ripper Bucket
- 58 **Demolition Buckets**
 - 60 Universal Bucket for Demolition and Recycling
 - 61 Foundation Bucket
 - 62 Excavation Bucket
- 64 **Ditch Cleaning Buckets**
 - 66 Ditch Cleaning Bucket "Rigid" (up to 12 t)
 - 68 Ditch Cleaning Bucket "Rigid" (11 to 29 t)
 - 70 Ditch Cleaning Bucket with Cylinder (up to 6.0 t)
 - 72 Ditch Cleaning Bucket with Cylinder (6.0 to 12 t)
 - 74 Ditch Cleaning Bucket with Cylinder (11 to 40 t)
 - 76 Ditch Cleaning Bucket with Tilt Motor (11 to 40 t)
- 78 **Special Attachments**
 - 80 Trapezoid Bucket
 - 82 Clearing Rake
 - 84 Grading Bucket
 - 86 Excavator Spade
 - 88 Ripper
 - 90 Pallet Fork
- 92 **Wheel Loader Shovels**
 - 94 Light Material Shovel
 - 96 General Purpose Shovel
 - 98 Rock Shovel
 - 100 High-Tip Shovel
- 102 **Custom Attachments**
- 102 **Custom components for construction machines**
- 103 **Steel Construction**
- 104 **After Sales**
 - 104 Wear and Spare Parts
 - 105 Service/Warranty
 - 106 Regeneration and Repair
 - 108 Solutions by Combi Wear Parts
 - 108 C-Rex by Combi Wear Parts
- 110 **Rädlinger At Coreum**
- 112 **Notes**



COMPANY PROFILE

ABOUT RÄDLINGER

Rädlinger Maschinen- und Stahlbau GmbH is a medium-sized, family-run company, which is headquartered in Cham in the Upper Palatinate. The construction equipment and steel construction business segments mutually benefit from the vast know-how and experience of the employees, as well as the modern equipped machine park in the plants in Cham and Schwandorf.



Rädlinger is one of the leading construction equipment suppliers in the German-speaking region. Customers throughout Europe benefit from the patented Rädlinger attachments. Excavator buckets, loading shovels, quick coupling systems, tilt motors and other innovative products are developed and manufactured to the highest quality standards.

In addition, Rädlinger is regarded as a specialist in all kinds of steel construction. Projects can be completed turnkey according to requirements, from project development and planning, to design and production, right up to installation. The range of services includes steel construction, bridge construction, noise protection, special structures and contract manufacturing.

The company group

The Werner Rädlinger Group comprising of 480 employees active at the Cham Headquarters and seven national and international locations consists of four enterprises: Rädlinger Maschinen- und Stahlbau GmbH, Rädlinger primus line GmbH, Rädlinger energy GmbH and Berufs-Bildungs-Zentrum (BBZ) Schwandorf.

The group combines a wide range of competences under one roof: Construction machinery equipment weighing tonnes, steel constructions and contract manufacturing are just as much a part of this as solutions for trenchless pipe rehabilitation, electrical engineering and photovoltaics as well as inter-company training and advanced training.

rädlinger

27000 m²

Production
and storage area

480

 Employees

1988

 Year of foundation

Our strengths are your advantages:

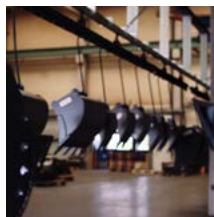
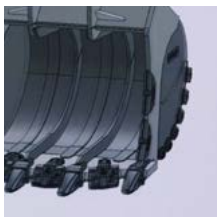
- » Pragmatic order processing
- » Customer-oriented engineering
- » State-of-the-art production
- » Large inventory
- » Efficient logistics
- » Convincing product quality



CONSTRUCTION MACHINERY EQUIPMENT

A construction machine can only develop its full potential with a high-quality attachment that optimally complements the carrier device.

Performance and efficiency depend not only on the features and the power of the excavator or wheel loader, but crucially on the quality of the equipment.



Innovation & Performance

Making successful products even better - a motto that promotes constant new developments and optimisation ideas.

Therefore, our own planning and development department always keeps up with the times when it comes to technology, materials and software-based design. Always with the aim of maximising the efficiency and lifetime of the attachments.

Product Diversity & Service

Our range of products includes all-round and special tools for a wide range of applications. Efficient series production and a large inventory of attachments, weighing up to 40 tonnes, ensure short delivery times.

In close cooperation with the customer, we also implement special designs and individual customer requests in one-off and series production. Rädlinger is also at your side as a supplier for wear and spare parts, as well as a partner for repairs and regeneration.

Why Rädlinger attachments?

				
Over 30 years of experience	From practice, for practice	Products from the market leader	Attachments for every application	Service team & personal customer contact
<p>Founded in 1988, Rädlinger Maschinen- und Stahlbau GmbH is an experienced manufacturer of high-quality attachments.</p> <p>However, company founder Josef Rädlinger Sr. had been gathering important information since 1963, when he laid the foundation for his construction company.</p>	<p>What does really matter concerning excavator buckets and loading shovels?</p> <p>To this day, application tests and feedback from the field are the basis for new product ideas and the development and optimisation of our products.</p>	<p>With around 30,000 attachments sold per year and a large inventory, we are among the market leaders in Germany.</p> <p>As such, we are constantly developing innovative products - for more efficiency and safety!</p>	<p>Our product range is as wide as the range of our customers' applications.</p> <p>Gardening and landscaping, civil engineering, extraction, demolition or recycling - we have the right tool for you!</p>	<p>Our young, dynamic sales team in-house and in the field is just as available to you as a contact person as our reliable service team!</p> <p>We place great value on personal customer contact!</p>

Competence & Quality

A high-quality product is created when the entire process is geared to this project from the very beginning. This applies to the development of products, the purchase and testing of materials, the production and assembly of components and to quality control.

The high level of expertise, know-how and experience of the employees at Rädlinger are just as crucial here as the exclusive use of high-quality materials and high-strength steels.

Our competitive advantage is the indispensable and close linking of experience and knowledge with practice.

A high level of awareness for the requirements of various application areas and a keen sense for different materials guide the entire process of product creation from development to optimisation to production.

Werner Rädlinger,
Managing Director



rädlinger

**QUICK
COUPLERS**

**TILT
MOTORS**

EQUIPMENT

High-quality attachments are essential, ...

but only in perfect combination with quick coupler, tilt motor and equipment are they able to perform at their peak.

Therefore, what lies between carrier device and attachment is crucial.

Here, we rely on high-quality workmanship and practical solutions to ensure safe, effective and smooth operations.



Quick Coupling Systems:
suitable for all excavator
makes

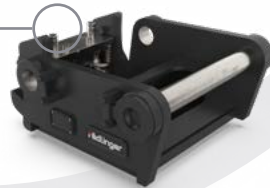


Rädlinger Tilt 90:
combined with quick coupler



Tilt Motor:
combined with bucket
or quick coupler

Adapters:
Hammer mounting plates
Adapter frames
Adapter plates





RÄDLINGER QUICK COUPLER MS

Application

The mechanical Rädlinger Quick Coupler significantly increases the flexibility of the excavator, as attachments can be changed simply and safely. The attachment is picked up and locked by two mounting claws and locking bolts, which engage in an adapter frame on the attachment. This lock is very easily manually operated with the aid of a socket spanner.

Features

- Simple and secure changing of attachments
- Combination with Rädlinger Tilt Motor or Rädlinger Tilt 90
- Mechanically processed contact surfaces
- Compact design
- Universally applicable to all different excavator makes
- Low maintenance and wear resistant
- Compatible with system Lehnhoff

Extra equipment

- » Load hook



Rädlinger Quick Coupler MS

Type	Operating weight in t	Weight in kg*
MS 01	0.7 - 2.0	20
MS 03	2.0 - 6.0	30
MS 08	5.0 - 12	95
MS 10	10 - 19	200
MS 21	18 - 28	300
MS 25	26 - 40	350
*approx. weight, depending on the respective excavator suspension used		



RÄDLINGER QUICK COUPLER HS

Application

The hydraulic Rädlinger Quick Coupler significantly increases the flexibility of the excavator, as attachments can be changed quickly and safely. The attachment is picked up and locked by two mounting claws and locking bolts, which engage in an adapter frame on the attachment. Locking and unlocking can be conveniently controlled from the cabin.

Features

- Quick and secure changing of attachments
- Combination with Rädlinger Tilt Motor or Rädlinger Tilt 90
- Mechanically processed contact surfaces
- Compact design
- Universally applicable to all different excavator makes
- Low maintenance and wear resistant
- Compatible with system Lehnhoff
- Visual indicator to check the locked state



The Rädlinger Quick Coupler HS complies with the current safety regulations by utilisation of a rigid catch hook and is certified by DGUV Test Construction Department.

Accessories

- » Hydraulic packages for hose routing
- » Hydraulic mounting kits for single-acting (EW) and double-acting (DW) quick coupler cylinders see ACCESSORIES on page 19

Extra equipment

- » Load hook



Rädlinger Quick Coupler HS

Type	Operating weight in t	Weight in kg*
HS 01	0.7 - 2.0	22
HS 03EW	1.5 - 4.8	33
HS 03DW	4.8 - 6.0	34
HS 08	5.0 - 12	100
HS 10	10 - 19	210
HS 21	18 - 28	320
HS 25	26 - 40	375
*approx. weight, depending on the respective excavator suspension used		



RÄDLINGER TILT 90

Application

With the vertical tilt function of the Rädlinger Tilt 90 by $2 \times 90^\circ$, work is possible in the most confined spaces. At the same time, the tilt motor expands the areas of use and performance of excavators as well as the efficiency of attachments.

Features

Tilt movement $2 \times 90^\circ$

Overload protection through double pressure relief valve

Protection against pressure loss on the excavator side by double pilot operated check valve

Maintenance-free and wear resistant

Low installation height

Size optimised for the respective carrier device

Can be mounted on various quick coupling systems

Hose-free connection to quick coupler via integrated rotary feedthrough

Protected hydraulic connections

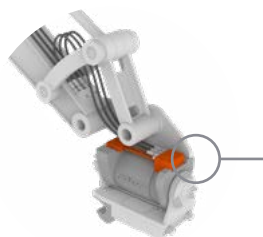
Kink protection and optimised hose routing through Collecting Unit

Optional hydraulic packages for hose routing for a wide range of carrier devices

Optional: hydraulic mounting kit for single-acting (EW)/double-acting (DW) quick coupler cylinders



Dimensions solo motor (w x h x l) in mm	Weight solo motor in kg	Tilt angle	Torque in Nm (at 210 bar)	Holding torque in Nm approx.	Oil requirement in ccm/1°	Max. operating pressure in bar	Set-up recommendation (Compatible with Rädlinger Quick Coupler)	Weight of complete unit in kg
Rädlinger Tilt 390 (1.5 - 2.7 t)								
165 x 145 x 267	27	180°	1080	2800	1.43	210	HS 01/ MS 01 HS 03EW/MS 03 also as HS X-TREME	from 54
Rädlinger Tilt 490 (2.8 - 3.8 t)								
190 x 163 x 298	38	180°	1880	4830	2.41	210	HS 03EW/MS 03 also as HS X-TREME	from 110
Rädlinger Tilt 590 (3.8 - 6.0 t)								
210 x 181 x 325	45	180°	2600	7100	3.35	210	HS 03EW (up to 4,8 t)/HS 03DW/MS 03 also as HS X-TREME	from 117
Rädlinger Tilt 790 (6.0 - 9.0 t)								
270 x 230 x 402	90	180°	4320	14200	5.23	210	HS 03DW/MS 03 HS 08/MS 08 also as HS X-TREME	from 195
Rädlinger Tilt 1090 (8.0 - 12 t)								
310 x 275 x 450	143	180°	8200	22800	10.5	210	HS 08/MS 08 also as HS X-TREME	from 342
Rädlinger Tilt 1490 (12 - 16 t)								
390 x 315 x 515	207	180°	15300	48600	20.53	210	HS 10/MS 10	from 515



Collecting Unit





RÄDLINGER TILT MOTOR

Application

With the Rädlinger Tilt Motor, attachments can be tilted by $2 \times 45^\circ$. Depending on size, a combination with either buckets or quick couplers is possible. This increases the performance of excavators as well as the efficiency of the attachments.

Features

Tilt movement $2 \times 45^\circ$

Overload protection through double pressure relief valve

Screwed and therefore exchangeable suspension

Protected hydraulic connections

Maintenance-free and wear resistant

High holding and turning torques

Combinations with other attachments possible

Extra equipment

- » Special seal to protect the standard seal of the motor for use underwater or in fine sandy soils on request.



Dimensions (w × h × l) in mm	Weight in kg	Tilt angle (mecha- nically limited)	Torque in Nm (at 150 bar)	Holding torque in Nm approx.	Oil requirement in ccm/1°	Operating pressure in bar	Max. oper- ating pressure (pressure relief valve) in bar
Tilt Motor Class I (11 - 15 t)							
260 × 266 × 350	128	90°	8500	16000	13.88	150	180
Tilt Motor Class II (15 - 22 t)							
310 × 363 × 368	185	90°	16000	30000	24.78	150	180
Tilt Motor Class II S (19 - 23 t)							
346 × 363 × 368	193	90°	16000	30000	24.78	150	180
Tilt Motor Class III L (23 - 26 t)							
362 × 371 × 420	237	90°	19500	38000	29.07	150	180
Tilt Motor Class III (23 - 29 t)							
365 × 408 × 471	326	90°	23000	43000	37.67	150	180
Tilt Motor Class IV (operating weight on request)							
405 × 448 × 540	460	90°	33000	62000	55.12	150	180
Tilt Motor Class V (operating weight on request)							
455 × 458 × 635	690	90°	47000	90000	83.17	150	180



TILT MOTOR WITH QUICK COUPLING SYSTEM

Application

By combining the tilt motor and quick coupling system, the advantages of the tilt motor can be used for several attachments. Tools of all kinds can be changed quickly and easily and thus benefit from the 2 x 45° tilt function.

Features

Can be mounted on various quick coupling systems starting at 11 tonnes

For direct mounting or with adapter frame

Slim design

Protected hydraulic connections

Low maintenance (depends on Quick Coupler) and wear resistant



ACCESSORIES

MOUNTING KIT FOR HYDRAULIC QUICK COUPLERS

Application

If the excavator does not have a quick coupler control, the machine can be retrofitted with a Rädlinger mounting kit for single-acting (EW) or double-acting (DW) quick couplers.



Features

Meets requirements of current safety regulations

Certified by DGUV Test Construction Department

Compact design

Hydraulic mounting kit DW

on the excavator side for double-acting quick coupler cylinder



Hydraulic mounting kit EW

on the excavator side for single-acting quick coupler cylinder



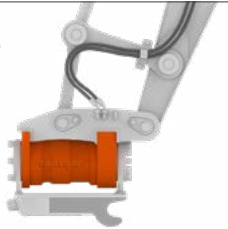
ACCESSORIES

HOSING PACKAGES

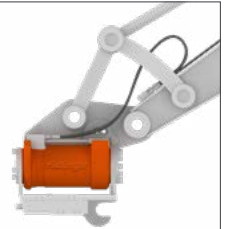
Application

Depending on the machine type, the hosing to the Rädlinger Tilt 90 can be on the inside or outside.

Hydraulic package
for outside hosing



Hydraulic package
for inside hosing



Features

Deflection block on dipper arm

Protected hose guide between arm and linkage

Features

Possibility of hose guidance through holding unit on the deflector



HAMMER MOUNTING PLATES/ADAPTER FRAMES/ADAPTER PLATES

Application

Hammer mounting plates, adapter frames and adapter plates are used as connecting parts between attachments and quick couplers.



Features

Compatible with various quick coupling systems

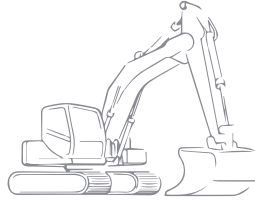
Welded or bolted design

Matched to excavator and attachment



OVERVIEW OF WEIGHT CLASSES

Our attachments are divided into classes so that you can find the right product for your construction machine faster. Just contact our sales team for a non-binding, detailed consultation and recommendation.



WEIGHT CLASSES - EXCAVATOR

Class	Operating weight in t
01	up to 1.0
02	1.0 - 1.8
03	1.6 - 2.6
04	2.6 - 3.5
05	3.5 - 5.0
06	4.8 - 6.0
07	6.0 - 8.0
08	8.0 - 10.0
09	10.0 - 12.0
11	11.0 - 15.0
15	15.0 - 19.0
19	19.0 - 23.0
23	23.0 - 29.0
29	29.0 - 40.0
40	40.0 - 50.0
50	50.0 - 70.0
70	70.0 - 100
100	100 - 130
130	130 - 185
185	185 - 260



WEIGHT CLASSES - WHEEL LOADER

Class	Operating weight in t
I	up to 3.0
II	3.0 - 3.5
III	3.5 - 4.0
IV	4.0 - 5.0
V	5.0 - 7.0
VI	7.0 - 9.0
VII	9.0 - 11.0
VIII	11.0 - 13.0
IX	13.0 - 17.0
X	17.0 - 22.0
XI	22.0 - 28.0
XII	28.0 - 45.0
XIII A	45.0 - 75.0
XIII B	45.0 - 100

A close-up photograph of a dark blue, heavy-duty backhoe bucket. The bucket is curved and shows signs of use, with some dirt and wear along the edges. A small, rectangular metal plate with the 'rädlinger' logo is mounted on the upper part of the bucket. The background is a plain, light-colored wall.

rädlinger

BACKHOE BUCKETS

Allrounder for every standard application.

Our constructions are optimised for their intended use in the field and they cover a wide range of applications in weight classes of approx. 0.8 to 40 tonnes:

From gardening and landscaping to working with medium-heavy soils or canal works - here you will find the suitable product.

SERIES FEATURES



Example: Standard Backhoe Bucket



STANDARD BACKHOE BUCKET (UP TO 6.0 T)

Application

Based on its high performance and bucket quality, the backhoe bucket for mini-excavators is most suitable for picking up, transporting and pouring out soil and medium-heavy ground in gardening and landscaping and on construction sites with smaller construction areas.

Features

Equipped with Radlog interface as standard

Bolt-on tooth removable for cable work (exception: class 01 with welded tooth)

Very stable and robust design

From class 04 base in HB400

Nose for bucket transport

Extra equipment

» Front-insert blade with replacement teeth



Cutting width in mm	Capacity ISO/L	Teeth	Weight in kg
Class 01 (up to 1.0 t)			
220	12	2	23
300	17	3	25
400	23	3	26

Class 02 (1.0 - 1.8 t)			
220	23	2	38
250	26	2	32
300	32	3	37
400	45	3	42
500	57	4	49
600	70	4	55

Class 03 (1.6 - 2.6 t)			
250	37	2	62
300	46	3	52
400	64	3	60
500	83	4	68
600	102	4	76
800	135	5	96

Cutting width in mm	Capacity ISO/L	Teeth	Weight in kg
Class 04 (2.6 - 3.5 t)			
250	51	2	70
300	58	3	64
400	82	3	73
500	106	4	82
600	130	4	91
800	179	5	109

Class 05 (3.5 - 5.0 t)			
300	72	2	72
400	103	3	84
500	134	4	96
600	165	4	106
700	196	5	118
800	227	5	128

Class 06 (4.8 - 6.0 t)			
300	77	2	79
400	112	3	92
500	146	4	105
600	180	4	115
800	248	5	139
1000	316	5	160



STANDARD BACKHOE BUCKET (6.0 TO 12 T)

Application

The Standard Backhoe Bucket provides the user with a versatile all-round device for picking up, transporting and pouring out soil and medium-heavy ground.

Features

- Robust, high-strength bucket
- Equipped with Radlog interface as standard
- Fitted by default with Bofors loader tooth system
- Base in HB400
- Side cutting edge in HB400
- Nose for bucket transport

Extra equipment

- » Front-insert blade with replacement teeth



Cutting width in mm	Capacity ISO/L	Teeth	Weight in kg
Class 07 (6.0 - 8.0 t)			
325	105	2	119
400	136	3	132
500	176	3	146
600	218	4	165
800	299	4	194
900	339	5	213
1000	380	5	228

Class 08 (8.0 - 10 t)			
325	127	2	133
400	164	3	148
500	213	3	164
600	263	4	184
800	362	4	218
900	411	5	239
1000	460	5	256

Class 09 (10 - 12 t)			
325	136	2	151
400	177	3	167
500	232	3	186
600	287	4	209
800	396	4	248
900	451	5	271
1000	506	5	290
1200	616	6	333



STANDARD BACKHOE BUCKET (11 TO 40 T)

Application

Weight optimisation ensures higher performance, best filling and emptying behaviour and less wear. It is suitable for picking up, transporting and pouring out soil and medium-heavy ground.

Features

Blade in HB400 with tooth system

Blade in HB500 without tooth system

Lower side cutting edge and side protection combined, in HB400

Base as standard in HB 400 and protruding to the side

CAT J-System or CWP C-Rex

Extra equipment

- › Front-insert blade with replacement teeth
- › All standard toothed systems available on request



Cutting width in mm	Capacity ISO/L	Teeth	Weight in kg
Class 11 (11 - 15 t)			
400	190	2	264
500	260	3	315
600	340	3	344
800	490	4	414
1000	650	4	471
1200	810	5	540

Cutting width in mm	Capacity ISO/L	Teeth	Weight in kg
Class 23 (23 - 29 t)			
600	490	3	634
800	710	4	758
1000	940	4	860
1200	1180	5	983
1400	1420	5	1085
1600	1660	6	1208

Class 15 (15 - 19 t)			
400	230	2	320
500	310	3	361
600	390	3	403
800	570	4	482
1000	760	4	549
1200	950	5	630
1400	1140	5	697

Class 29 (29 - 40 t)			
800	860	3	1011
1000	1140	3	1143
1200	1430	4	1314
1400	1730	4	1446
1600	2030	5	1616
1800	2330	5	1791

Class 19 (19 - 23 t)			
600	440	3	482
800	640	4	576
1000	850	4	657
1200	1060	5	752
1400	1270	5	836
1600	1480	6	931



STANDARD BACKHOE BUCKET WITHOUT TEETH (6.0 T)

Application

The Standard Backhoe Bucket without Teeth is perfectly suited for constructing pipeline trenches, shafts and the field of network construction. Furthermore, it is used for loading loose bulk materials.

Features

Equipped with Radlog interface as standard

From class 04 base in HB400

Side cutting edge in HB400

Nose for bucket transport

Optimised opening angle for better parting

Protruding blade



Cutting width in mm	Capacity ISO/L	Weight in kg
Class 01 (up to 1.0 t)		
220	14	22
300	17	24
400	25	27

Class 02 (1.0 - 1.8 t)		
220	22	36
250	26	32
300	33	35
400	48	41
500	64	47
600	80	53

Class 03 (1.6 - 2.6 t)		
250	33	63
300	47	50
400	70	57
500	94	65
600	119	72

Class 04 (2.6 - 3.5 t)		
250	43	72
300	56	67
400	83	75
500	112	84
600	142	93

Class 05 (3.5 - 5.0 t)		
300	63	71
400	95	81
500	129	91
600	165	101
700	201	111

Class 06 (4.8 - 6.0 t)		
300	75	80
400	112	92
500	151	104
600	193	115
800	279	138



STANDARD BACKHOE BUCKET WITHOUT TEETH (6.0 TO 12 T)

Application

The Standard Backhoe Bucket without Teeth is perfectly suited for constructing pipeline trenches, shafts and the field of network construction. Furthermore, it is used for loading loose bulk materials.

Features

Equipped with Radlog interface as standard

Base in HB400

Side cutting edge in HB400

Nose for bucket transport

Extra equipment

» Profile blade



Cutting width in mm	Capacity ISO/L	Weight in kg
Class 07 (6.0 - 8.0 t)		
325	91	108
400	122	118
500	165	132
600	210	146
800	305	174
900	354	188

Class 08 (8.0 - 10 t)		
325	114	140
400	152	144
500	206	161
600	263	178
800	373	212
900	445	229
1000	490	248

Class 09 (10 - 12 t)		
325	123	152
400	165	166
500	225	185
600	286	205
800	418	245
900	486	265
1000	555	285
1200	693	325



STANDARD BACKHOE BUCKET WITHOUT TEETH (11 TO 40 T)

Application

Weight optimisation ensures higher performance, best filling and emptying behaviour and less wear. It is suitable for picking up, transporting and pouring out soil and medium-heavy ground.

Features

Blade in HB400 with tooth system

Blade in HB500 without tooth system

Lower side cutting edge and side protection combined, in HB400

Base as standard in HB 400 and protruding to the side

Available with all well-established quick coupler adapter frames

Extra equipment

» Profile blade



Cutting width in mm	Capacity ISO/L	Weight in kg
Class 11 (11 - 15 t)		
400	190	248
500	260	260
600	340	282
800	490	335
1000	650	387
1200	810	440

Cutting width in mm	Capacity ISO/L	Weight in kg
Class 23 (23 - 29 t)		
600	490	561
800	710	652
1000	940	751
1200	1180	850
1400	1420	949
1600	1660	1048

Class 15 (15 - 19 t)		
400	230	306
500	310	328
600	390	354
800	570	419
1000	760	484
1200	950	549
1400	1140	614

Class 29 (29 - 40 t)		
800	860	886
1000	1140	1016
1200	1430	1146
1400	1730	1276
1600	2030	1407
1800	2330	1537

Class 19 (19 - 23 t)		
600	440	447
800	640	517
1000	850	594
1200	1060	672
1400	1270	748
1600	1480	825

NEW! Order now!



BACKHOE BUCKET X-TREME (11 TO 40 T)

Application

Designed for heavy-duty use: The Backhoe Bucket X-TREME combines the experience gained from hundreds of individually manufactured backhoe buckets for the toughest applications. This has resulted in a standardised bucket for hard soils and other tasks causing increased wear and tear.

Features

Reinforcing corners on the interface

With CWP tooth system as standard

Robust tooth system with HD-tips

Stronger blade compared to the standard backhoe bucket

Wear strips in HB500

Side and base completely made of HB500

Stronger side cutting edges and side protection combined

Bigger wall thickness of the bucket box compared to the standard backhoe bucket



Cutting width in mm	Capacity ISO/L	Weight in kg
Class 11 (11 - 15 t) with CWP C-Rex R-14		
600	340	384
800	490	487
1000	650	580
1200	810	663

Class 15 (15 - 19 t) with CWP C-Rex R-18		
600	390	422
800	570	535
1000	760	637
1200	950	765

Class 19 (19 - 23 t) with CWP C-Rex R-18		
600	440	606
800	640	769
1000	850	915
1200	1060	1046
1400	1270	1162
1600	1480	1265

Cutting width in mm	Capacity ISO/L	Weight in kg
Class 23 (23 - 29 t) with CWP C-Rex R-23		
600	490	722
800	710	918
1000	940	1092
1200	1180	1248
1400	1420	1387
1600	1660	1510

Class 29 (29 - 40 t) with CWP C-Rex R-29		
1000	1140	1403
1200	1430	1604
1400	1730	1782
1600	2030	1940
1800	2330	2292



CABLE BUCKET

Application

The special bucket shape corresponds exactly to the specified requirements in fibre optic expansion. The buckets are designed to satisfy current requests from tenders as well as market requirements. Minimally wide and yet sufficiently deep trenches can be made. In addition, the bucket is suitable for laying irrigation lines and other lines in gardening and landscaping, as it helps to avoid field damage.

Features

Blade in HB500

Equipped with Radlog interface as standard

Self-cleaning due to curved base

Drainage holes



Cutting width in mm	Digging depth in mm
Class 01 (up to 1.0 t)	
120	700

Class 02 (1.0 - 1.8 t)	
120	700

Class 03 (1.6 - 2.6 t)	
120	750

Class 04 (2.6 - 3.5 t)	
120	750

Class 05 (3.5 - 5.0 t)	
120	750

Class 06 (4.8 - 6.0 t)	
120	750

Class 07 (6.0 - 8.0 t)	
120	800

Class 08 (8.0 - 10 t)	
120	800

Class 09 (10 - 12 t)	
120	800



SEWER BUCKET

Application

The bucket shape is especially suitable for operation in sewers and for shoring. Even sewer areas which are deep and difficult to access can be reached.

Features

Blade in HB400 with tooth system

Blade in HB500 without tooth system

Lower side cutting edge and side protection combined, in HB400

Base as standard in HB 400 and protruding to the side for highest durability

Available with all well-established quick coupler adapter frames

Extra equipment

- » Ideally equipped with single-bar tooth-holder system to create a flat base
- » Front-insert blade



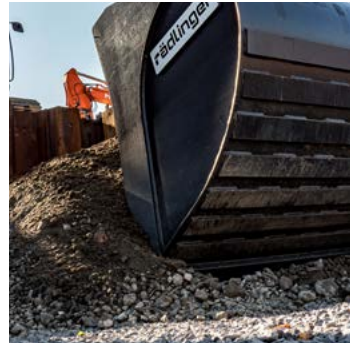
Cutting width in mm	Capacity ISO/L
Class 11 (11 - 15 t)	
600	323
800	466

Class 15 (15 - 19 t)	
600	385
800	542

Class 19 (19 - 23 t)	
600	415
800	620

Class 23 (23 - 29 t)	
600	465
800	675
1000	893

NEW! Available for order from 2023



BACKHOE BUCKET WITH CYLINDER (11 TO 40 T)

Application

The Backhoe Bucket is used in hydraulic construction and landscaping. In addition to excavating building pits, the tilt function enables work on embankments and the removal of the subgrade, independent of the excavator standing angle.

Features

Ideally combines the shape of the conventional Backhoe Bucket and tiltable Ditch Cleaning Bucket

Blade in HB500

Transverse wear strips

Tilt movement $2 \times 45^\circ$



Cutting width in mm	Capacity ISO/L	Weight in kg
Class 11 (11 - 15 t)		
1200	540	574
1400	645	638
1600	750	695

Cutting width in mm	Capacity ISO/L	Weight in kg
Class 23 (23 - 29 t)		
1400	1250	1242
1600	1450	1296
1800	1650	1350

Class 15 (15 - 19 t)		
1200	680	646
1400	800	800
1600	920	920

Class 29 (29 - 40 t)		
1600	2000	1682
1800	2300	1835
2000	2600	1952

Class 19 (19 - 23 t)		
1400	990	1018
1600	1140	1096
1800	1290	1162



BACKHOE BUCKET WITH TILT MOTOR

Application

The Backhoe Bucket with Tilt Motor is used in hydraulic construction and landscaping. In addition to excavating building pits, the tilt function enables work on embankments and the removal of the subgrade, independent of the excavator standing angle.

Features

Ideally combines the shape of the conventional Backhoe Bucket and tiltable Ditch Cleaning Bucket

Blade and transverse wear strips in HB500

Problem-free, safe and maintenance-free operation through use of the tilt motor

Tilt movement $2 \times 45^\circ$

2.5° tapering per side

Extra equipment

- » Bucket body in HB400
- » Reversible screw-on blade
- » Special seal
- » Load retaining valve
- » GPS mount



Cutting width in mm	Capacity ISO/L	Weight in kg
Tilt Motor Class I (11 - 15 t)		
1000	435	660
1200	540	715
1400	645	770
1600	750	830

Cutting width in mm	Capacity ISO/L	Weight in kg
Tilt Motor Class III L (23 - 26 t)		
1400	1250	1315
1600	1450	1366
1800	1650	1418
2000	1850	1470

Tilt Motor Class II S (15 - 19 t)		
1000	560	836
1200	680	895
1400	800	955
1600	920	1014

Tilt Motor Class III (23 - 29 t)		
1400	1420	1572
1600	1630	1632
1800	1850	1691
2000	2080	1751

Tilt Motor Class II S (19 - 23 t)		
1200	840	1091
1400	990	1173
1600	1140	1254

Tilt Motor Class IV (29 - 40 t)		
1400	1700	2365
1600	2000	2500
1800	2300	2635
2000	2600	2770



SKELETON BUCKET

Application

This special tool is exceptionally suited for loading and sorting work. Skeleton Buckets are mainly used for filtering out rock or paving stones and for recycling building rubble.

Features

Up to Class 09 equipped with Radlog interface as standard

Up to Class 09 with nose for bucket transport

Blade HB400 with tooth system

Side cutting edge in HB400

Versatile for all-round use

Equipped with CAT J-System, CWP C-Rex or bolt-on tooth

Up to Class 09 skeleton base in HB400

From Class 11 optionally with skeleton base or round bars in HB400

Standardised meshes to ensure availability by stock at hand

Extra equipment

» Front-insert blade with replacement teeth



Class	Cutting width in mm	Capacity ISO/L
Model with skeleton base		
02	500	57
03	800	140
04	800	179
05	800	227
06	800	248
07	800	299
08	1000	460
09	1200	616

Class	Cutting width in mm	Capacity ISO/L
Model with skeleton base or round bars		
11	1000	650
11	1200	810
15	1200	950
15	1400	1140
19	800	640
19	1000	850
19	1200	1060
19	1400	1270
23	1200	1180
23	1400	1420
23	1600	1660
29	1600	2030

rädlinger

MINING BUCKETS



Strong partner in the mining industry

For these special buckets, we only use high-quality materials and high-strength steels. This is how we achieve the extremely robust construction with relatively low weight.

This makes them extremely resistant for their use in quarries, gravel pits and mining, for example.

SERIES FEATURES

Size classes
from 19 to 150

Blade and side
cutting edge made of
special steel

Slightly flared tooth
holders on the
corners and backward
tapering bucket body
for optimal cut

Side protection and
wear strips in
HB400 or HB500

Custom manufacturing and
equipment with a wide variety
of tooth systems and blades
possible

Example: Rock Bucket



BACKHOE BUCKET INDIVIDUAL/HEAVY

Application

This backhoe bucket is a popular product among professional users in the mining and demolition industry for heavy-duty use with high break-out forces and excessive wear.

Features

With CWP tooth system as standard

Extra equipment

- » Bucket body in HB400
- » Load hook
- » Ball groove
- » Various reinforcement stages
- » Welded blade reinforcement in front and side cutting edge reinforcement below
- » Intermediate sizes and special designs available on request



Cutting width in mm	Capacity ISO/L	Teeth
Class 19 (19 - 23 t)		
400	340	2
500	450	3
600	560	3
800	770	4
1000	990	4
1200	1210	5
1400	1430	5
1600	1640	6

Class 23 (23 - 29 t)		
600	830	3
800	1100	4
1000	1380	4
1200	1650	5
1400	1930	5
1600	2200	6
1800	2480	6



ROCK BUCKET

Application

Like the Backhoe Bucket Individual/Heavy the Rädlinger Rock Bucket is the perfect partner for mining. With its special reinforcement and optimised side cutting edges, it is suited for even the most demanding applications.

Features

Welded blade reinforcement in front and side cutting edge reinforcement below

Heavy-duty and deep side cutting edges for power transmission from the box to the blade

With CWP tooth system as standard



Cutting width in mm	Capacity ISO/L	Teeth
Class 29 (29.0 - 40.0 t)		
800	1260	3
1000	1580	3
1200	1900	4
1400	2220	4
1600	2540	5
1800	2860	5

Cutting width in mm	Capacity ISO/L	Teeth
Class 50 (50.0 - 70.0 t)		
1400	3190	4
1600	3640	4
1800	4100	4
2000	4550	5
2200	5000	5
2400	5460	6

Class 40 (40.0 - 50.0 t)		
1000	1790	3
1200	2150	4
1400	2510	4
1600	2870	4
1800	3230	5
2000	3590	5

Class 70 (70.0 - 100 t)		
1400	4010	3
1600	4590	4
1800	5170	4
2000	5730	4
2200	6300	5
2400	6870	5
2600	7450	5

Class 100 (100 - 130 t)		
Cutting width and capacity in coordination		



STONE PLACING BUCKET

Application

The Stone Placing Bucket is especially characterised by its extremely far protruding cutting edge. As a result, the optimal pick-up and placement of stones, stone blocks and ashlar is possible without any problems and canting. We always tailor the exact version to the customer's needs.

Features

Far forward-protruding blade

Side cutting edge recessed far back

Base-sided fitting of stone-laying protrusions for the fine placement of stones

Extremely robust construction made of high-quality materials

Welded side cutting edge reinforcement below

Heavy-duty and deep side cutting edges for power transmission from the box to the blade

With CWP tooth system as standard





RIPPER BUCKET

Application

The Ripper Bucket is suitable for the heaviest tear-out tasks with extreme break-out forces and for direct extraction - with increasing restrictions in blasting operations - as an alternative to traditional drilling and blasting operations. We always tailor the exact design to the customer's needs.

Features

Similar to Rock Bucket but with thicker walling and stronger tooth system

Extremely robust construction design and low net weight through the use of high-quality materials and high-strength steels

Welded blade reinforcement in front and side cutting edge reinforcement below

Heavy-duty and deep side cutting edges for power transmission from the box to the blade

Reinforcing rib in the centre

Extremely protruding central tooth or double tip acts as a ripper tooth

With CWP tooth system as standard

Ripper Bucket Class	Tooth System
40 (up to 45.0 t)	All standard tooth systems available on request. Central tooth one size bigger than outer teeth.
50 (up to 65.0 t)	
70 (up to 90.0 t)	
70 (up to 120 t)	
130 (up to 185 t)	
130 (up to 260 t)	

A large, dark-colored excavator bucket is shown in the foreground, filled with a large amount of rubble, including concrete blocks, bricks, and twisted metal. The bucket is positioned over a pile of debris. In the background, a multi-story building is visible, partially obscured by trees and other demolition equipment. The sky is overcast.

rädlinger

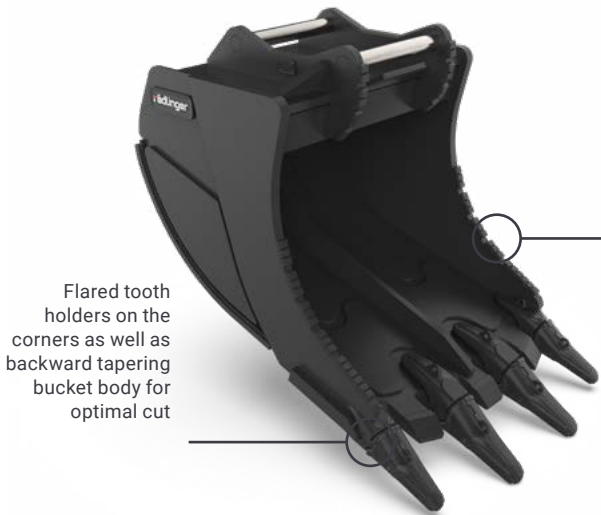
DEMOLITION BUCKETS

The experts for individual requirements in demolition and recycling.

In terms of construction, material selection and wear protection, these buckets perfectly meet the high demands of demolition and recycling. For optimum filling, penetration and digging behaviour, the products are specially tailored to the individual purposes of the industry.

SERIES FEATURES

Size classes
from class 23

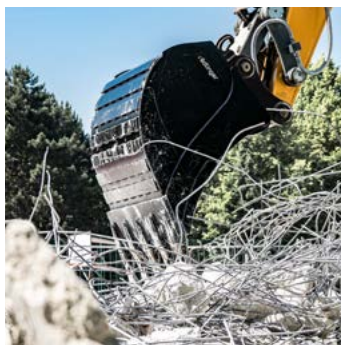


Flared tooth holders on the corners as well as backward tapering bucket body for optimal cut

Additional reinforcement stages for extended applications possible

Ideal and harmonious basic structure and shaping of the supporting parts ensure perfect power flow from the tooth tip to the bucket suspension, the interface to the machine.

Example: Foundation Bucket



UNIVERSAL BUCKET FOR DEMOLITION AND RECYCLING

Application

Unrivalled in loading all materials to be supplied to recycling: demolition waste, dismantled material, excavated material, building rubble, flotsam.

Features

Additional wear tips and blades between the teeth

Reinforced bucket interface

Reinforcement of the engagement area of the side cutting edges

With CWP tooth system as standard



Cutting width in mm	Capacity ISO/L	Teeth
Class 29 (29 - 40 t)		
1600	2300	5



FOUNDATION BUCKET

Application

Ideally suited for demolition work, for example for levering foundations, moving larger parts and loosening broken foundation parts; also ideal for pulling foundations and for breaking through ceilings.

Features

Protruding blade with completely curved side cutting edge

Generously dimensioned double tips combined with trapezoidal blades

Reinforcement sickle

Reinforced bucket interface

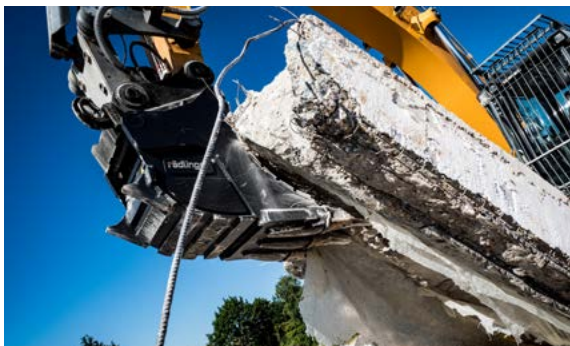
Standard reinforcement stage with blade cutting edge and blade-/base-sided interior lining

Special reinforcement stage in the engagement area (chocky bars)

With CWP tooth system as standard



Cutting width in mm	Capacity ISO/L	Teeth
Class 29 (29 - 40 t)		
1500	1560	4



EXCAVATION BUCKET

Application

Due to the compact shape and the very small digging radius, maximum tear-out forces are achieved for the excavation and lifting during foundation dismantling. Moreover, the ideal partner for moving massive pieces of rock.

Features

Extremely oversized plate thickness and tooth system design in relation to the bucket dimension

.....
Tooth holders at the corners angled outwards by 15°

.....
Robust, generously dimensioned noses for moving

.....
Special reinforcement stage in the engagement area (chocky bars)

.....
With CWP tooth system as standard



Cutting width in mm	Capacity ISO/L	Teeth
Class 01 (up to 1.0 t)		
230	16	3
Class 02 (1.0 - 1.8 t)		
230	16	3
Class 03 (1.6 - 2.6 t)		
260	31	2
Class 04 (2.6 - 3.5 t)		
260	31	2
Class 05 (3.5 - 5.0 t)		
260	31	2
Class 06 (4.8 - 6.0 t)		
260	31	2
Class 07 (6.0 - 8.0 t)		
370	74	2
Class 08 (8.0 - 10 t)		
370	74	2
Class 09 (10 - 12 t)		
370	74	2
Class 23 (23 - 29 t)		
700	270	3
Class 29 (29 - 40 t)		
750	352	3



radlinger

DITCH CLEANING BUCKETS

Reliable partner in ditch and trough construction

The cutting width of ditch cleaning buckets is very large in relation to their overall dimensions. Together with their straight blade, they are ideal for shaping and modelling terrain with the excavator - for example, for making embankments and shoulders or for levelling surfaces.

In swivelling designs with a cylinder or tilt motor, or in combination with the Rädlinger Tilt 90, it is even possible to create complex terrain forms.

SERIES FEATURES

Versions rigid, with cylinder or with integrated tilt motor available

Wall thicknesses, materials and optional extras matched to the application

Wide open tub for easy emptying

Protruding bottom

Large cutting width selection available as standard stock item

Size classes from 01 to 40

Example: Ditch Cleaning Bucket with Cylinder



DITCH CLEANING BUCKET "RIGID" (UP TO 12 T)

Application

The Ditch Cleaning Bucket is used for picking up, transporting and pouring out soil and lightweight ground (light and medium-heavy use). In combination with the tilt motor Rädlinger Tilt 90, the bucket is particularly suited for ditch and trough construction, for the creation of embankments and shoulders, for grading and ditch cleaning and for the creation of complex ground forms.

Features

Equipped with Radlog interface as standard

No centre sickle (except cutting width 1800 mm), therefore also suitable for sticky material and optimal for dosing

From class 03 base in HB400

Side cutting edge made of blade steel HB500, 4° tapering per side

Drainage holes

Nose for bucket transport

Extra equipment

- » Embankment edge
- » Profile blade



Cutting width in mm	Capacity ISO/L	Weight in kg
Class 01 (up to 1.0 t)		
800	39	40

Class 02 (1.0 - 1.8 t)		
850	82	70
1000	97	80
1200	117	91

Class 03 (1.6 - 2.6 t)		
1000	97	93
1200	117	107
1400	138	120

Class 04 (2.6 - 3.5 t)		
1200	157	122
1400	185	138

Class 05 (3.5 - 5.0 t)		
1200	184	142
1400	216	160

Cutting width in mm	Capacity ISO/L	Weight in kg
Class 06 (4.8 - 6.0 t)		
1400	233	167
1600	267	187

from class 07: cutting width 1800 mm with sickle

Class 07 (6.0 - 8.0 t)		
1500	276	199
1600	295	210
1800	334	222

Class 08 (8.0 - 10 t)		
1600	338	265
1800	382	292

Class 09 (10 - 12 t)		
1600	379	320
1800	429	353



DITCH CLEANING BUCKET "RIGID" (11 TO 29 T)

Application

The Ditch Cleaning Bucket is used for picking up, transporting and pouring out soil and lightweight ground (light and medium-heavy use). In combination with the Rädlinger tilt motor versions, the bucket is particularly suited for ditch and trough construction, for the creation of embankments and shoulders, for grading and ditch cleaning and for the creation of complex ground forms.

Features

Base in HB400

Drainage holes

Embankment edge

Nose for bucket transport

Extra equipment

» Profile blades



Cutting width in mm	Capacity ISO/L	Weight in kg
Class 11 (11 - 15 t)		
1800	440	479
2000	495	522

Class 15 (15 - 19 t)		
1800	600	502
2000	650	546

Class 19 (19 - 23 t)		
2000	900	754
2200	1000	812

Class 23 (23 - 29 t)		
2000	1100	1101
2200	1260	1185
2400	1430	1269
2600	1600	1352



DITCH CLEANING BUCKET WITH CYLINDER (UP TO 6.0 T)

Application

The Ditch Cleaning Bucket with Cylinder is used for picking up, transporting and pouring out soil and lightweight ground (light and medium-heavy use). The bucket is particularly suited for ditch and trough construction, for the creation of embankments and shoulders, for grading and ditch cleaning and for the creation of complex ground forms.

Features

No centre sickle, therefore also suitable for sticky material and optimal for dosing

Tilt movement $2 \times 45^\circ$

Protruding base to the side

2° tapering per side

Drainage holes

Extra equipment

- » Embankment edge
- » Optional protected load retaining valve integrated into the cylinder



Cutting width in mm	Capacity ISO/L	Weight in kg
Class 01 (up to 1.0 t)		
800	43	50

Class 02 (1.0 - 1.8 t)		
850	81	112
1000	96	128
1200	115	141

Class 03 (1.6 - 2.6 t)		
1000	100	132
1200	122	147
1400	143	164

Cutting width in mm	Capacity ISO/L	Weight in kg
Class 04 (2.6 - 3.5 t)		
1200	154	153
1400	180	170

Class 05 (3.5 - 5.0 t)		
1200	184	179
1400	216	200

Class 06 (4.8 - 6.0 t)		
1200	197	180
1400	230	201
1600	265	222



DITCH CLEANING BUCKET WITH CYLINDER (6.0 TO 12 T)

Application

The Ditch Cleaning Bucket with Cylinder is used for picking up, transporting and pouring out soil and lightweight ground (light and medium-heavy use). The bucket is exceptionally suited for ditch and trough construction, for the creation of embankments and shoulders, for grading and ditch cleaning and for the creation of complex ground forms.

Features

No centre sickle (except cutting width 1800 mm), therefore also suitable for sticky material and optimal for dosing

Tilt movement $2 \times 45^\circ$ through a generously dimensioned hydraulic cylinder

Side-protruding base in HB400

2° tapering per side

Drainage holes

Extra equipment

- » Embankment edge
- » Profile blade
- » Optional protected load retaining valve integrated into the cylinder



Cutting width in mm	Capacity ISO/L	Weight in kg
Class 07 (6.0 - 8.0 t)		
1600	298	345
1800	342	381

Class 08 (8.0 - 10 t)		
1600	339	356
1800	383	394

Class 09 (10 - 12 t)		
1600	380	361
1800	429	400



DITCH CLEANING BUCKET WITH CYLINDER (11 TO 40 T)

Application

The Ditch Cleaning Bucket with Cylinder is used for picking up, transporting and pouring out soil and lightweight ground (light and medium-heavy use). The bucket is exceptionally suited for ditch and trough construction, for the creation of embankments and shoulders, for grading and ditch cleaning and for the creation of complex ground forms.

Features

Embankment edge

Piston rod protection

No centre sickle (except cutting width 1800 mm), therefore also suitable for sticky material and optimal for dosing

Tilt movement $2 \times 45^\circ$ through two generously dimensioned hydraulic cylinders

Side-protruding base in HB400

2° tapering per side

Drainage holes

Extra equipment

- » GPS mount
- » Profile blade
- » Optional protected load retaining valve



Cutting width in mm	Capacity ISO/L	Weight in kg
Class 11 (11 - 15 t)		
1800	440	575
2000	495	605

Class 15 (15 - 19 t)		
1800	600	633
2000	650	662

Class 19 (19 - 23 t)		
2000	900	934
2200	1000	969

Class 23 (23 - 29 t)		
2200	1260	1560
2400	1430	1620

Class 29 (29 - 40 t)		
2200	1515	1761
2400	1700	1833
2600	1885	1895
2800	2070	1958



DITCH CLEANING BUCKET WITH TILT MOTOR (11 TO 40 T)

Application

This Ditch Cleaning Bucket is used for picking up, transporting and pouring out soil and lightweight ground (light and medium-heavy use). The bucket is exceptionally suited for ditch and trough construction, for the creation of embankments and shoulders, for grading and ditch cleaning and for the creation of complex ground forms.

Features

Robust and low-maintenance tilt motor

Embankment edge

Hydraulic hoses are directly fed to the tilt motor to rule out damage

Bolts, cylinder and cylinder covering not needed

Screw-retained suspension for changing for various carrier devices

Integrated pressure relief valve prevents overload of the tilt motor

Drainage holes

Protruding base to the side in HB400

Tilt movement $2 \times 45^\circ$

Extra equipment

- › Special seal to protect the standard motor seal when used under water or in fine sandy soils available on request for tilt motor classes II S and III L
- › Bucket body in HB400
- › Load retaining valve
- › GPS mount



Cutting width in mm	Capacity ISO/L	Weight in kg
Tilt Motor Class I (11 - 15 t)		
1800	440	626
2000	495	658
2200	550	690
2400	605	722

Tilt Motor Class II (15 - 19 t)		
1800	600	833
2000	650	868

Tilt Motor Class II S (19 - 23 t)		
1800	800	961
2000	900	1002
2200	1000	1043

Tilt Motor Class III L (23 - 26 t)		
2000	1000	1263
2200	1125	1315
2400	1250	1366
2600	1375	1418

Cutting width in mm	Capacity ISO/L	Weight in kg
Tilt Motor Class III (23 - 29 t)		
2000	1100	1515
2200	1260	1572
2400	1430	1632
2600	1600	1691

Tilt Motor Class IV (29 - 40 t)		
2000	1330	2090
2200	1515	2160
2400	1700	2245
2600	1885	2325
2800	2070	2395

Tilt Motor Class V (up to 50 t) on request



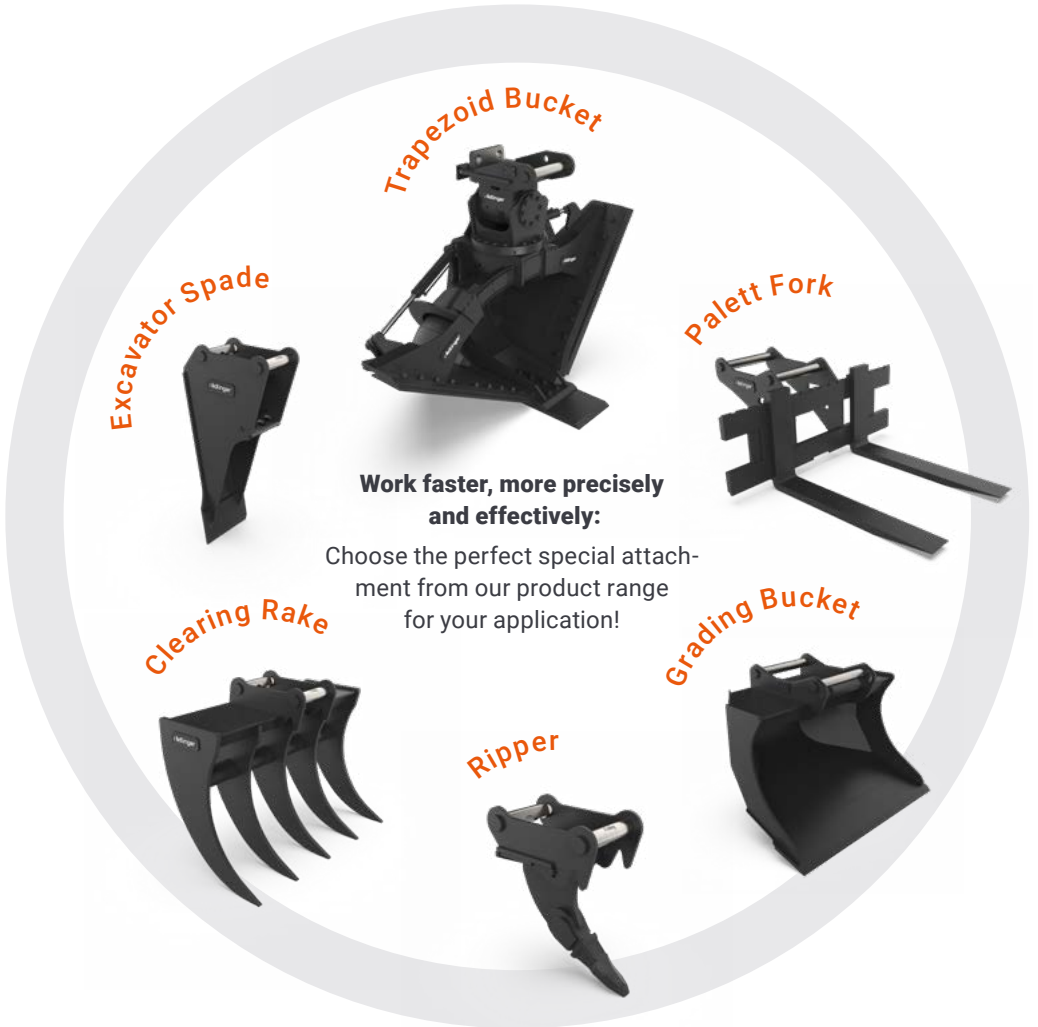
rädlinger

SPECIAL ATTACH- MENTS

The first choice for special missions

Where construction sites and measures require very special work and buckets or shovels reach their limits, our special attachments are the ideal solution.

The following special products have been perfectly tailored to their respective applications and designed and optimised in close cooperation with our customers.





TRAPEZOID BUCKET

Application

The bucket is suitable for the regeneration of shoulders as well as for forest path maintenance or cleaning of overgrown and silted trenches on roads and forest paths. With the Trapezoid Bucket, a far higher output per hour and thus higher revenues can be achieved than with conventional ditch cleaning buckets.

Features

45° rotatable through a cylinder

Tilt movement 2 × 45° through tilt motor

Separately adjustable wings to avoid obstacles for unlimited range of operation

Embankment angle of 30° to 55° separately adjustable on each side

Base width approx. 400 mm

Available for excavators of 10 - 16 t and 16 - 20 t operating weight

Extra equipment

- » Wear and tear packages for forestry road construction available (Forest, Forest-Plus)
- » Rotary movement possible by means of cylinder or tilt rotator
- » Also available as rigid version (Individual profiles and embankment angles available on request)





CLEARING RAKE

Application

This special attachment can be used to clear bushes, shrubs and undergrowth. It is also ideal for collecting tree prunings, loosening the soil and for sorting work in recycling.

Features

Equipped with Radlog interface as standard

Tines in HB400

Nose for bucket transport



Class	Cutting width in mm	Tines
02	600	5
03/04	800	5
05/06	1000	5
07	1000	5
08/09	1000	5



GRADING BUCKET

Application

A perfect combination with tilt rotators:

When this bucket turns, it can cleverly avoid obstacles thanks to its chamfered corners. Clean leveling and backfilling therefore becomes child's play.

Features

Equipped with Radlog interface as standard

Grading Bucket without teeth

Including transverse wear strip in HB500

Up to Class 09 with nose for bucket transport

Extra equipment

- › Without transverse wear strip but with base in HB400
- › Bucket body in HB400
- › Tooth system
- › Reversible screw-on blade



Cutting width in mm	Capacity ISO/L	Weight in kg
Class 02 (1.0 - 1.8 t)		
700	51	52
800	58	59

Class 03 (1.6 - 2.6 t)		
800	81	75
900	94	84
1000	107	93

Class 04 (2.6 - 3.5 t)		
900	122	95
1000	138	105
1100	154	116
1200	172	127

Class 05 (3.5 - 5.0 t)		
1000	175	121
1100	195	133
1200	215	145
1300	235	157

Class 06 (4.8 - 6.0 t)		
1000	205	137
1100	230	150
1200	255	163
1300	290	176

Class 07 (6.0 - 8.0 t)		
1000	245	176
1100	275	194
1200	305	212
1300	335	230

Class 08 (8.0 - 10 t)		
1200	355	233
1300	395	252
1400	435	271
1500	475	290

Cutting width in mm	Capacity ISO/L	Weight in kg
Class 09 (10 - 12 t)		
1200	400	270
1300	445	293
1400	490	316
1500	535	339

Class 11 (11 - 15 t)		
1400	570	405
1500	620	434
1600	670	463

Class 15 (15 - 19 t)		
1500	720	515
1600	780	549
1700	840	583

Class 19 (19 - 23 t)		
1500	830	610
1600	900	651
1700	970	692
1800	1040	733

Class 23 (23 - 29 t)		
1800	1200	912
1900	1290	963
2000	1380	1014

Class 29 (29 - 40 t)		
1800	1400	1210
2000	1600	1345
2200	1800	1480



EXCAVATOR SPADE

Application

Digging or excavating, vertical or horizontal work - the Excavator Spade can be used to carry out shafting, digging and uncovering during material excavation.

Damages, for example to pipes and cables, can be reduced and the vertical digging depth can be increased.

Features

Combines conventional and Radlog interface; enables horizontal and vertical operation

Open design for material movement

Standardised sizes:
QC 01 to 08
Oil Quick OQ40 to OQ70/55

Extra equipment

- » Exchangeable blade, laterally moveable for more effective digging under pipes and cables
- » Reversible screw-on blade
- » Rädlinger Tilt 90 for expansion of the application possibilities



Interface	Wall thickness class	Blade in mm	Height in mm	Cutting width in mm	Weight in kg
QC 01 Radlog	01 - 02	16 × 150, HB500	900	320	55
QC 03 Radlog	03 - 06	20 × 200, HB500	1000	320	90
Oil Quick OQ40	03 - 06	20 × 200, HB500	1000	320	93
Oil Quick OQ45-5	03 - 06	20 × 200, HB500	1000	350	113
Oil Quick OQ45-5	07 - 09	25 × 200, HB500	1500	400	227
Oil Quick OQ 60	07 - 09	25 × 200, HB500	1500	400	258
QC 08 Radlog	07 - 09	25 × 200, HB500	1500	400	205
Oil Quick OQ 60	11 - 15	30 × 300, HB500	1800	500	383
Oil Quick OQ 65	15 - 19	30 × 300, HB500	1800	500	453
Oil Quick OQ 70/55	19 - 23	30 × 300, HB500	2000	650	624



RIPPER

Application

The Ripper is used for breaking up the hardest types of rock (e.g. limestone, clay slate, nagelfluh layers, slag, basalt and granite).

Features

Concentrates the highest possible force on the tooth tip

Can be combined with standard tooth systems

Very robust construction design

Up to Class 09 with nose for bucket transport



Ripper class	Operating weight in t	Sword strength in mm	Weight in kg	Tooth radius in mm
02	1.0 - 1.8	20	43	500
03	1.6 - 2.6	20	51	500
04	2.6 - 3.5	20	51	500
05	3.5 - 5.0	25	73	600
06	4.8 - 6.0	25	73	600
07	6.0 - 8.0	30	73	600
08	8.0 - 10	35	196	800
09	10 - 12	35	196	900
11	11 - 15	40	295	900
15	15 - 19	50	265	1000
19	19 - 23	50	560	1200
23	23 - 29	50	705	1200
29	29 - 40	60	940	1400



PALLET FORK

Application

The pallet fork aids in lifting and transportation of pallets and goods of all kinds under which the fork can be moved (pallet fork up to 16000 kg).

Features

Individually adjustable forks

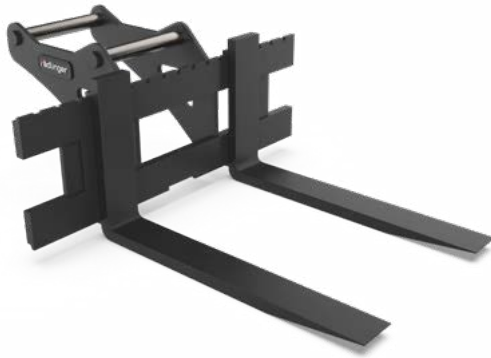
Tines with safety lock

Production with direct or quick coupler attachment

For all common pallets due to adjustable tines

Extra equipment

» Custom-built designs available



Class	Interface	Fork carrier width in mm	Fork carrier	Tine dimensions in mm	Load capacity in kg at LSP 500
06	QC 03 Radlog	1200	ISO2	100 × 40 × 1200	2500
07 / 08 / 09	QC 08 Radlog	1250	ISO2	100 × 40 × 1200	2500
07 / 08 / 09	Oil Quick OQ45	1200	ISO2	100 × 40 × 1200	2000
11 / 15	QC 10 Radlog	1200	ISO3	125 × 45 × 1200	2500
11 / 15 / 19	Oil Quick OQ65	1200	ISO3	125 × 45 × 1200	4000
11 / 15 / 19	Oil Quick OQ70/55	1200	ISO3	125 × 45 × 1200	4000

When using with tilt rotators, grabs etc., this must be specified when ordering.
Please also check in your machine documentation whether the use on your excavator is approved.

FEM class	Model	Load capacity in kg	Fork carrier width in mm	Tine dimensions in mm
Class I, II (up to 3,5 t)				
II	normal	2500	1400	120 × 40 × 1.200
III	heavy	4000	1500	125 × 45 × 1.200
Class III, IV, V (up to 7 t)				
III	normal	4000	1500	125 × 45 × 1.200
III	heavy	5000	1500	150 × 50 × 1.200
Class VI, VII (up to 11 t)				
III	normal	5000	1500	150 × 50 × 1.200
IV	heavy	7000	1750	150 × 60 × 1.200
IV	heavy	10000	1750	200 × 70 × 1.500
Class VIII, IX (up to 17 t)				
IV	normal	7000	1750	150 × 60 × 1.200
IV	normal	10000	1750	200 × 70 × 1.500
V	heavy	10000	1750	200 × 80 × 1.500
Class X (up to 22 t)				
V	normal	10000	1750	200 × 80 × 1.500
on request	heavy	16000		



radlinger

WHEEL LOADER SHOVELS

Efficient handling and loading

Only with an optimally adapted loading shovel can you attain the full performance potential of your wheel loader. What matters is the right balance between the wheel loader, the shovel and the nature of the material being worked on.

In our programme, you will find the right tools for wheel loaders of up to 100 tonnes of machine weight for light to heavy duty use.

SERIES FEATURES

Wall thicknesses adapted to the application

Shovel shape optimised for fast and maximum filling

Largest possible shovel volume

Blades with or without tooth systems

Armour depending on requirements, individual equipment possible

Size classes from class III to class XIV

Example: General purpose shovel



LIGHT MATERIAL SHOVEL

Application

This shovel is exceptionally suited for handling light bulk material. Areas of application: feed industry, composting plants, coal reclaiming, sawmills and snow transport. Other areas of application depend on choice of equipment with pull-off edge or upward increasing base at the rear of the shovel.

Features

Maximum shovel volume through design for light bulk material

Pull-off edge option: Load area always remains straight since the edge can be used as a grading blade during reverse driving

Shovel shape designed for fast and maximum filling

Manufactured in all sizes and for all carrier devices and with direct or quick coupler attachment possible

Equipped lengthwise with four wear strips and one transverse wear strip

With CWP tooth system as standard

Extra equipment

- » Deflector plate in the mast area
- » Bucket body completely in HB400
- » Reversible screw-on blade in HB500
- » Load hook
- » Side protection



Class in t	Cutting width in mm	Capacity ISO/L	Weight in kg
IV (4.0 - 5.0)	2100	1080	490
V (5.0 - 7.0)	2200	1440	620
VI (7.0 - 9.0)	2400	2000	800
VII (9.0 - 11)	2600	2400	960
VIII (11 - 13)	2800	3000	1335
IX (13 - 17)	3000	4000	1975
X (17 - 22)	3200	4900	2270
XI (22 - 28)	3600	5760	3065
XII (28 - 45)	3800	10000	5210



GENERAL PURPOSE SHOVEL

Application

The General Purpose Shovel is suitable for handling “medium” bulk materials (e.g. ballast, soil, gravel, stone chippings or sand loading). Other areas of application depend on choice of equipment with pull-off edge or upward increasing base at the rear of the shovel.

Features

Pull-off edge option: Load area always remains straight since the edge can be used as a grading blade during reverse driving

Shovel shape designed for fast and maximum filling

Manufactured in all sizes and for all carrier devices and with direct or quick coupler attachment possible

Equipped lengthwise with four wear strips and one transverse wear strip

With CWP tooth system as standard

Extra equipment

- › Bucket body completely in HB400
- › Tooth protection
- › Deflector plate in the mast area
- › Reversible screw-on blade



Cutting width in mm	Capacity ISO/L	Weight in kg
Class IV (4.0 - 5.0 t)		
1800	850	314
1900	900	325
2000	950	337
2100	1000	349
2200	1050	360

Class V (5.0 - 7.0 t)		
1900	1000	404
2000	1060	416
2100	1120	428
2200	1180	440
2300	1240	454

Class VI (7.0 - 9.0 t)		
2200	1360	512
2300	1420	534
2400	1500	556
2500	1560	580

Class VII (9.0 - 11 t)		
2400	1720	760
2500	1800	792
2600	1880	824
2700	1960	856

Cutting width in mm	Capacity ISO/L	Weight in kg
Class VIII (11 - 13 t)		
2500	2300	928
2600	2400	966
2700	2500	1002
2800	2600	1040

Class IX (13 - 17 t)		
2700	2930	1246
2800	3040	1292
2900	3150	1338
2990	3260	1380

Class X (17 - 22 t)		
2800	3340	1564
2900	3470	1618
2990	3600	1670
3100	3730	1732
3200	3860	1788

Class XI (22 - 28 t)		
2990	4170	2038
3100	4320	2110
3200	4470	2182
3300	4620	2248
3400	4770	2320



ROCK SHOVEL

Application

With its extremely robust construction design, the Rock Shovel can also be used under difficult conditions with particularly strong wear behaviour, such as found in the mining industry when handling or loading quarry and rock materials.

Features

Very generously dimensioned box

Shovel with trapezoidal blade

All cutting widths are fitted with 8 teeth

Spillguard with pipes or slots

With CWP tooth system as standard

Extra equipment

- » Bucket body completely in HB400
- » Side stone deflectors
- » Protection segments
- » Screw-on segments



Class in t	Cutting width in mm	Capacity ISO/L	Weight in kg
VIII (11 - 13)	ca. 2800	2300	1685 - 1860
IX (13 - 17)	ca. 3000	3000	2110 - 2350
X (17 - 22)	ca. 3200	3800	3000 - 3340
XI (22 - 28)	ca. 3600	4600	3590 - 3940
XII (28 - 45)	ca. 3800	6300	5300 - 5920



HIGH-TIP SHOVEL

Application

The High-Tip Shovel is suitable for all applications which requires pouring out from high up.

Features

Optimal fill level with flowing materials by means of front lenticular shovel contour

Largest possible inside width of shovel through cylinder boxes set to the rear and recessed bolt locks on the outer side of the shovel for optimum penetration

Because of the field of view standard in case of oversized shovels as standard with viewing slots and additional screwable covers

Hydraulic piping covered in protective casing

Two cylinders arranged upright in external boxes set at an angle to the rear

As standard, rubber stops between frame and shovel

Shovel with straight blade in HB500 (without teeth)

End cushioned cylinders

Extra equipment

- » Shovel body completely in HB400
- » Reversible screw-on blade in HB500
- » Lowering brake valve



Ausführung	Cutting width in mm	Capacity ISO/L
Klasse III		
n	2100	1200
Klasse IV		
n	2200	1500
Klasse V		
l	2300	1700
n	2300	1200
Klasse VI		
el	2400	3000
l	2400	2300
n/v	2400	1700
Klasse VII		
el	2500	3800
l	2500	3000
n/v	2500	2300
Klasse VIII		
el	2700	4800
l	2700	3600
n/v	2700	2800

Ausführung	Cutting width in mm	Capacity ISO/L
Klasse IX		
el	2980	5000
l	2980	4200
n/v	2980	3200
Klasse X		
el	3200	7300
l	3200	6200
n/v	3200	4500
Klasse XI		
el	3600	12000
l	3600	8000
n/v	3600	6000

Scale of bulk weights:		
extra light	(el)	< 0.8 t/m ³
light	(l)	0.8 - 1.2 t/m ³
normal	(n)	1.2 - 1.6 t/m ³
reinforced	(v)	> 1.6 t/m ³



CUSTOM ATTACHEMENTS

Many work processes can be made more efficient through individual constructions and a good idea. With its experienced construction department, Rädlinger Maschinen- und Stahlbau has the planning know-how to develop specialised attachments. The steel construction department then turns even the largest and most complex plans into reality in its generously equipped machinery.

Examples of custom attachments previously created:

- » Ball forceps
- » Face shovel
- » Dragline bucket

CUSTOM COMPONENTS FOR CONSTRUCTION MACHINES

Do you need special solutions directly for your construction machine? Our steel construction experts can handle exceptional requirements as well.

Examples for custom components:

- » Excavator arm retrofit
- » Excavator arm extension
- » Dozer blade
- » Raised side panel



STEEL CONSTRUCTION

In the field of steel construction, we offer customised solutions according to customer requirements for all types of steelwork.

Whether you want to implement small or large steelwork projects: We are the ideal partner. We also dare to look forward to extraordinary and difficult projects! With our experienced team and modern machinery, we ensure fast and flexible order processing while maintaining excellent quality.

What we offer you in the field of steel construction

- » Project development and planning
- » Development
- » Construction
- » Production
- » Delivery
- » Installation



AFTER SALES

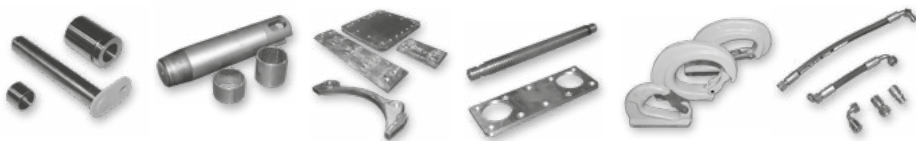
WEAR AND SPARE PARTS

Downtime halts project progress and costs money. To provide customers and our own production with relevant components for repairs and regeneration, Rädlinger has a large store of wear and spare parts.



We have various spare and wear parts in stock:

- » Steel blades
- » Reversible blades
- » Profile blades
- » Wear protection
- » Wear strips
- » Tooth systems e. g.: Tooth kits, spare teeth, adapters
- » Loading hooks
- » Bolts and connectors
- » Hydraulic cylinders
- » Bolts and protections
- » Valves
- » Tilt motors
- » Seals





AFTER SALES SERVICE/WARRANTY

Thanks to qualified staff, high-quality materials and a process-oriented quality control, we can grant our customers products of convincing quality.

In warranty cases, our service department will be glad to help you.



During the warranty period, our customers appreciate straightforward and fast support:

- » On-site inspection upon agreement
- » Repair works with original spare parts
- » Hydraulic measurements incl. recording (pressure and volumetric flow rate)
- » Inspection, consulting and support for special solutions
- » Company service fleet
- » Comprehensive, Germany-wide service network



AFTER SALES

REGENERATION AND REPAIR

Long and intensive work performances leave traces on your buckets and shovels. Proper and timely maintenance is therefore necessary both for lasting use of the construction equipment and also for optimal machinery performance and economical fuel consumption.

High quality & fast

Rädlinger Maschinenbau has a large stock of various wear and spare parts made of high-quality materials from well-known manufacturers, which are used for regeneration. Together with the modern machine pool, repairs or conversions can be carried out without long waiting times. Rädlinger also provides the customers with blades, bucket bases and various sheet metal parts for their own regeneration.

Individual & tested

Details about the equipment's area of application and the options for technical improvements are coordinated with the customers for optimum regeneration of the attachment. One option contains various protective armour systems that are fitted to the entire attachment and effectively protect all areas that are subject to wear. These have been best proven in use and have been further developed for years.



We professionally repair your worn and damaged attachments of all types, for example:

- » Backhoe buckets and face shovels
- » Ditch cleaning bucket
- » General purpose buckets
- » Arms and booms
- » Tilt motors
- » Quick couplers



After a detailed damage analysis, our sales representatives will coordinate the technical options with you and will consult you competently and inclusively of a cost estimate for optimal and quick repair works.



SOLUTIONS BY COMBI WEAR PARTS

Strong partners: Rädlinger Maschinen- und Stahlbau GmbH is a distributor of Combi Wear Parts AB. The Swedish manufacturer of extremely durable wear parts supplies exactly the teeth and armour that make our products fit for the toughest applications - made of high-strength steel. We stock not only the kits for the basic equipment, but also individual spare parts.

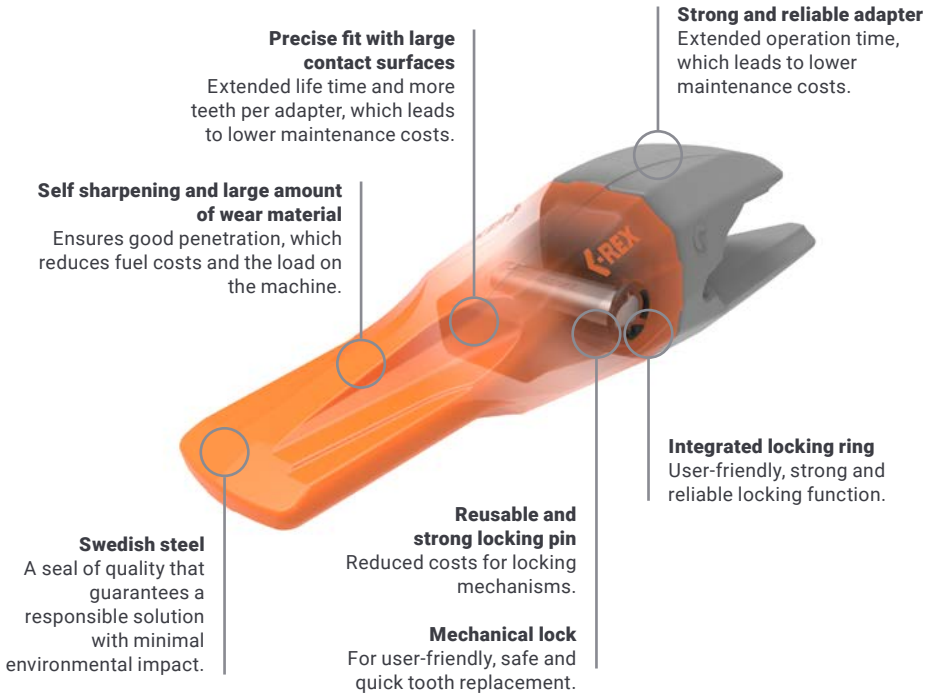
C-REX BY COMBI WEAR PARTS

Reliable, functional and sustainable teeth for your spoons and shovels

To increase operation time, the length of the tooth and proportion of wear material have been maximized. The adapters have also been reinforced to significantly lower operating costs for users.

C-REX has a unique mechanical lock that makes mounting and dismounting of the teeth much easier. The lock is hammerless and consists of just one loose part, a locking pin that can be re-used throughout the lifetime of the system.

All teeth are supplied with an integrated locking ring, which ensures reliable function. Using a special designed locking tool it is easy to lock and unlock the tooth, simply by moving the locking ring a quarter turn.



Precise fit with large contact surfaces

Extended life time and more teeth per adapter, which leads to lower maintenance costs.

Self sharpening and large amount of wear material

Ensures good penetration, which reduces fuel costs and the load on the machine.

Swedish steel

A seal of quality that guarantees a responsible solution with minimal environmental impact.

Reusable and strong locking pin

Reduced costs for locking mechanisms.

Mechanical lock

For user-friendly, safe and quick tooth replacement.

Strong and reliable adapter

Extended operation time, which leads to lower maintenance costs.

Integrated locking ring

User-friendly, strong and reliable locking function.



rädlinger

RÄDLINGER AT COREUM

Rädlinger can be experienced 365 days a year at the Coreum in Stockstadt near Frankfurt. Our products can be tested there in various, realistic demo construction sites - with expert advice from our sales team.



COREUM365.DE

experience and
test rädlinger live.

365



rädlinger

RÄDLINGER
MASCHINEN- UND STAHLBAU GMBH
Kammerdorfer Straße 16 | 93413 Cham
Tel.: +49 9971 8088-0
Fax.: +49 9971 8088-9999

info@raedlinger.de
www.raedlinger.de

Managing Director:
Werner Rädlinger, Johann Stopfner

rädlinger
WERNER RÄDLINGER GROUP

Version: 09/2022
Subject to technical modifications and product improvements.
All information about dimensions and weight are approximate and not guaranteed.